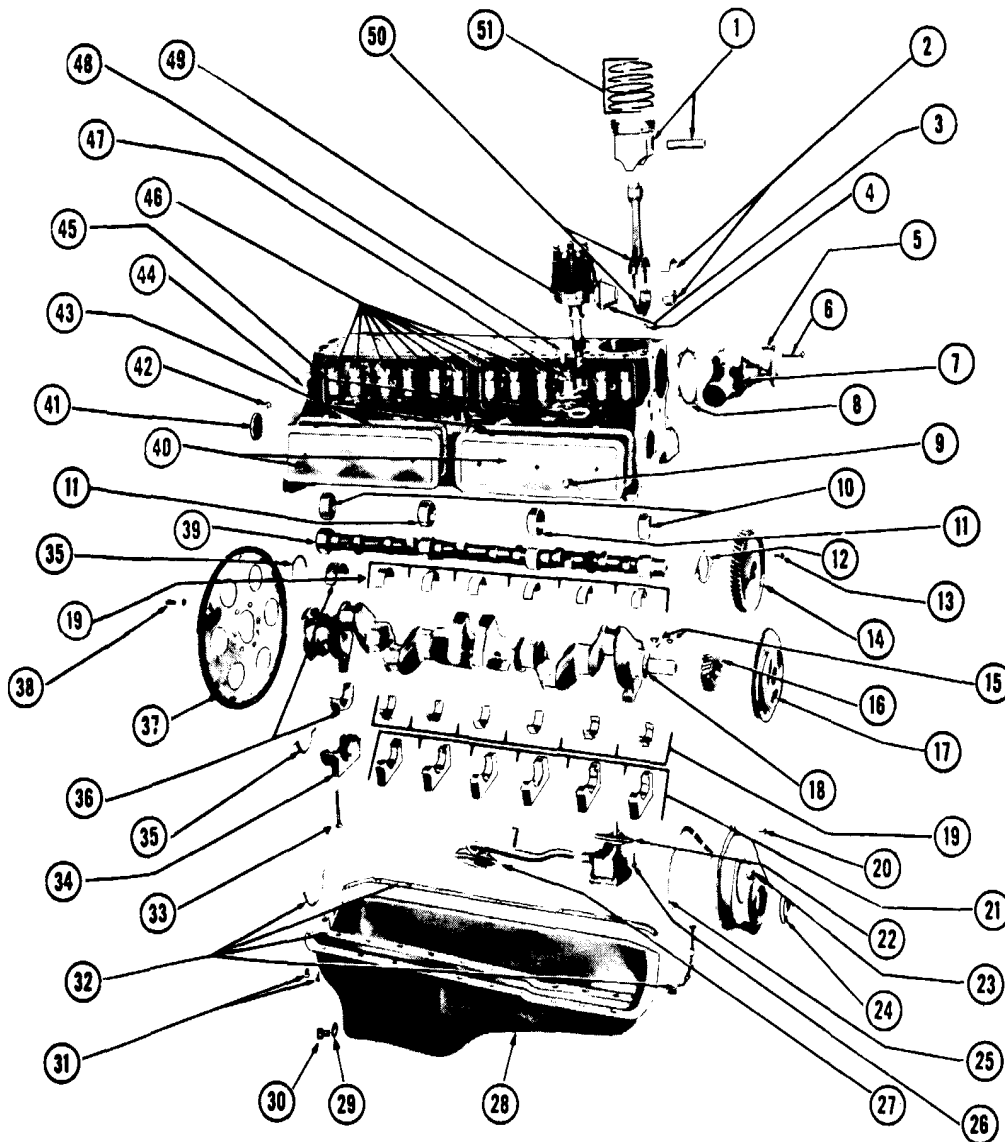


ENGINE & TRANSMISSION MOUNTING

Key	Part Name	Group No.
307 ENGINE		
1	MOUNTING, Engine Front Mounting	0.027
2	WASHER (7/16" I.D. x 1" O.D.)	8.929
3	BOLT, Engine Insulator to Bracket (7/16"-14 x 3 7/8")	0.002
4	BOLT (3/8"-16 x 1 1/8")	8.900
5	BRACKET, Engine Mounting Side Member	0.029
6	MOUNTING ASM., Trans. Supt.	4.081
7	LOCKWASHER (7/16")	8.931
8	BOLT (7/16"-14 x 1")	8.900
9	SUPPORT, Trans. Rear Crossmember	4.081
10	WASHER (7/16" I.D. x 1" O.D.)	8.929
11	WASHER (3/8" I.D. x 7/8" O.D.)	8.929
12	NUT (3/8"-16)	8.915
13	NUT (7/16"-14)	8.917
14	BOLT (3/8"-16 x 7/8")	8.900
15	SHIELD, Engine Mount Heat	0.029
250 ENGINE		
16	SPACER, Engine Mounting Bracket	0.002
17	BRACKET, Engine Front Mounting	0.029
18	BOLT (3/8"-16 x 3/4")	8.900
19	MOUNTING, Engine Front Mounting (Incl. #19)	0.027
20	BRACKET, Engine Mounting Stop (Part of #18)	N.S.
21	BRACKET, Engine Mounting Side Member	0.029
22	BOLT (7/16"-20 x 4")	8.900



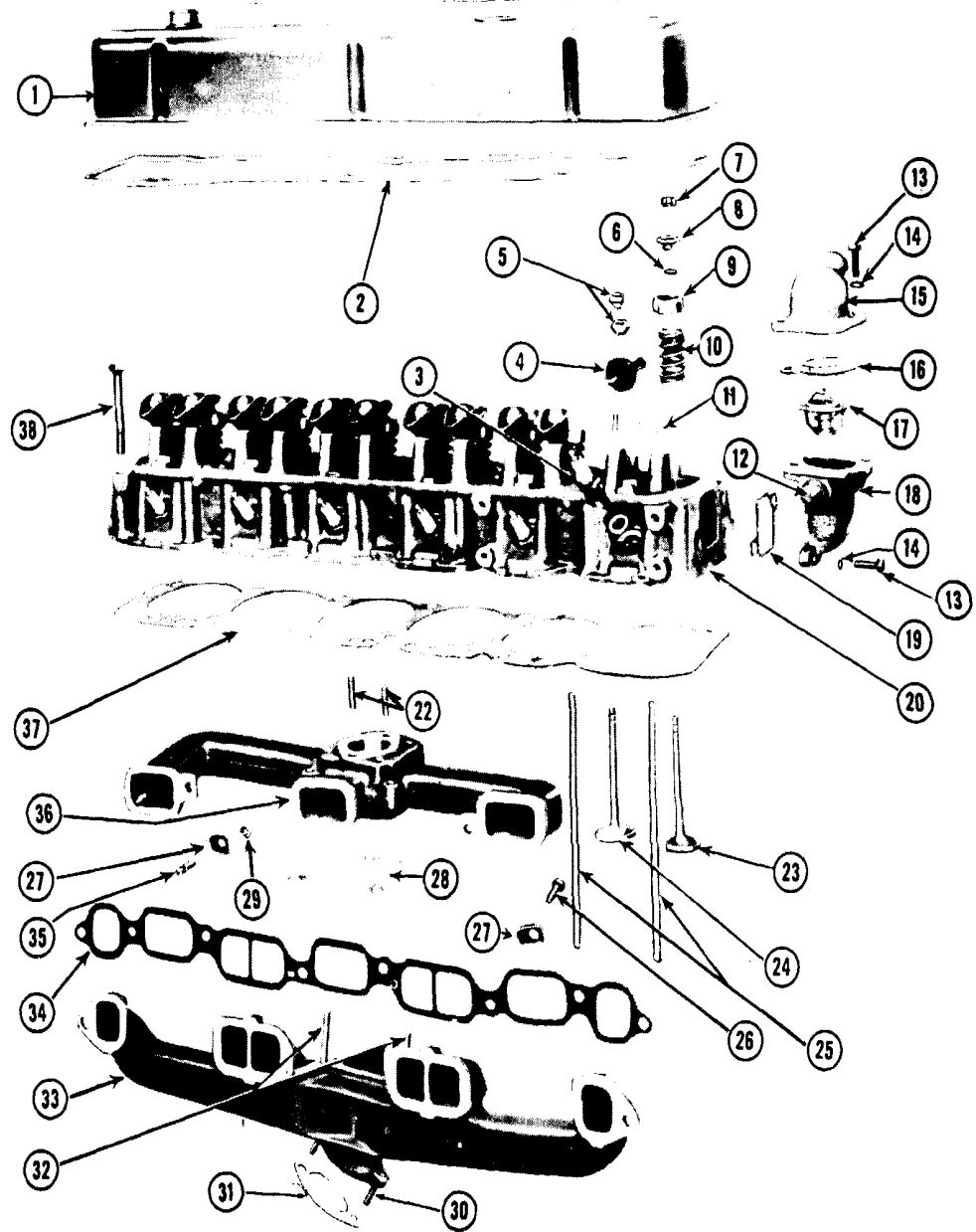
VENTURA II PARTS CATALOGUE



BLOCK 6 CYL. 250 ENGINE

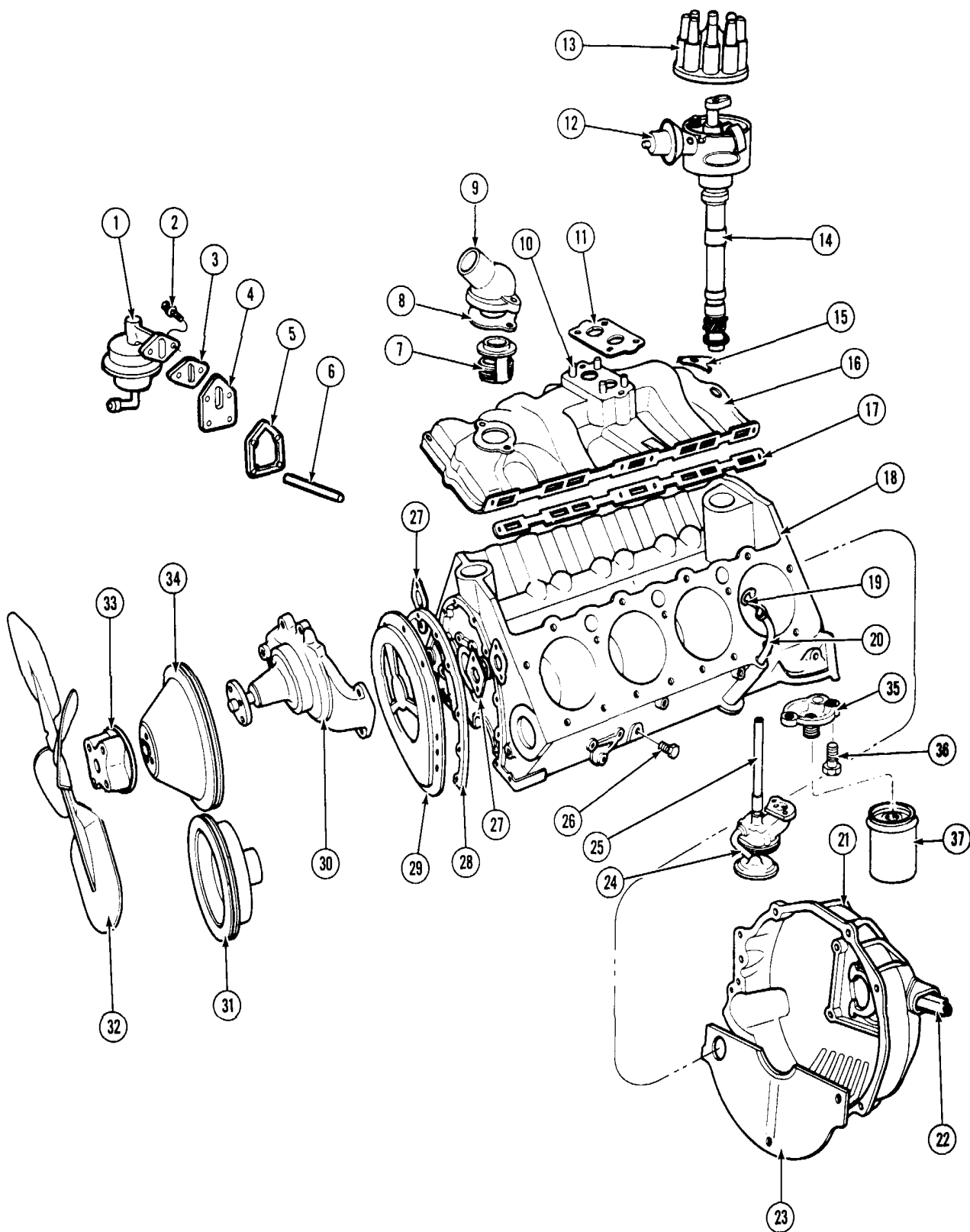
Key	Description	Group
1	Piston and Pin Assembly	0.629
2	Bearing Unit, Connecting Rod	0.616
3	Control, Distributor Vacuum	2.410
4	Nut, Connecting Rod Bolt	0.626
5	Bolt—(Standard Stock)— $\frac{5}{16}$ -18x1"	8.900
6	Bolt—(Standard Stock)— $\frac{5}{16}$ -18x1 $\frac{1}{2}$ "	8.900
7	Pump Assembly, Water	1.069
8	Gasket, Water Pump	1.079
9	Bolt, Lock Washer and Seal Assy., Push Rod Cover	0.446
10	Bearing, Camshaft—# 1 and # 4 Locations	0.546
11	Bearing, Camshaft—# 2 and # 3 Locations	0.546
12	Bearing, Camshaft Thrust	0.533
13	Bolt—(Standard Stock)— $\frac{1}{4}$ -20x $\frac{3}{4}$ "	8.900
14	Gear or Sprocket, Camshaft	0.736
15	Key, Woodruff—(Standard Stock)	8.960
16	Gear or Sprocket, Crankshaft	0.728
17	Balancer Assembly, Harmonic	0.659
18	Crankshaft Assembly	0.646
19	Bearing Unit, Crankshaft—# 1-2-3-4-5-6 Locations	0.096
20	Bolt, Crankcase Front End Cover to Front Plate—(Standard Stock)	8.900
21	Cap, Crankshaft Bearing—# 1-2-3-4-5-6 Locations	0.095
22	Pump Assembly, Oil	1.652
23	Cover Assembly, Crankcase Front End	0.206
24	Seal Assembly, Crankcase Front End Cover Oil	0.213
25	Gasket, Crankcase Front End Cover	0.207

Key	Description	Group
26	Bolt—(Standard Stock)— $\frac{5}{16}$ -18x $\frac{3}{8}$ "	8.900
27	Screen Assembly, Oil Pump Suction	1.656
28	Pan, Oil	1.426
29	Gasket, Oil Pan Drain Plug	1.456
30	Screw, Oil Pan Drain	8.900
31	Bolt and Lockwasher, Oil Pan	8.900
32	Gasket Unit, Oil Pan	1.429
33	Bolt, Crankshaft Bearing Cap	0.056
34	Cap, Crankshaft Bearing—# 7 Location	0.095
35	Seal, Crankshaft Rear Bearing Oil	0.137
36	Bearing Unit, Crankshaft—# 7 Location	0.096
37	Flywheel Assembly	0.666
38	Bolt, Flywheel	0.669
39	Camshaft Assembly	0.519
40	Cover, Push Rod	0.439
41	Plug, Camshaft Rear Bearing	0.553
42	Plug—(Standard Stock)— $\frac{3}{8}$ "	8.971
43	Gasket, Push Rod Cover	0.443
44	Block Assembly, Cylinder (Complete or Fitted)	0.033
45	Gasket, Ignition Timer Distributor	2.363
46	Lifter Assembly, Hydraulic Valve	0.459
47	Clamp, Ignition Timer Distributor	2.363
48	Bolt—(Standard Stock)— $\frac{3}{8}$ -16x $\frac{7}{8}$ "	8.900
49	Distributor, Ignition Timer	2.361
50	Rod Assembly, Connecting	0.603
51	Ring Unit, Piston	0.643



HEAD AND MANIFOLDS - 6 CYL. 250 ENGINE

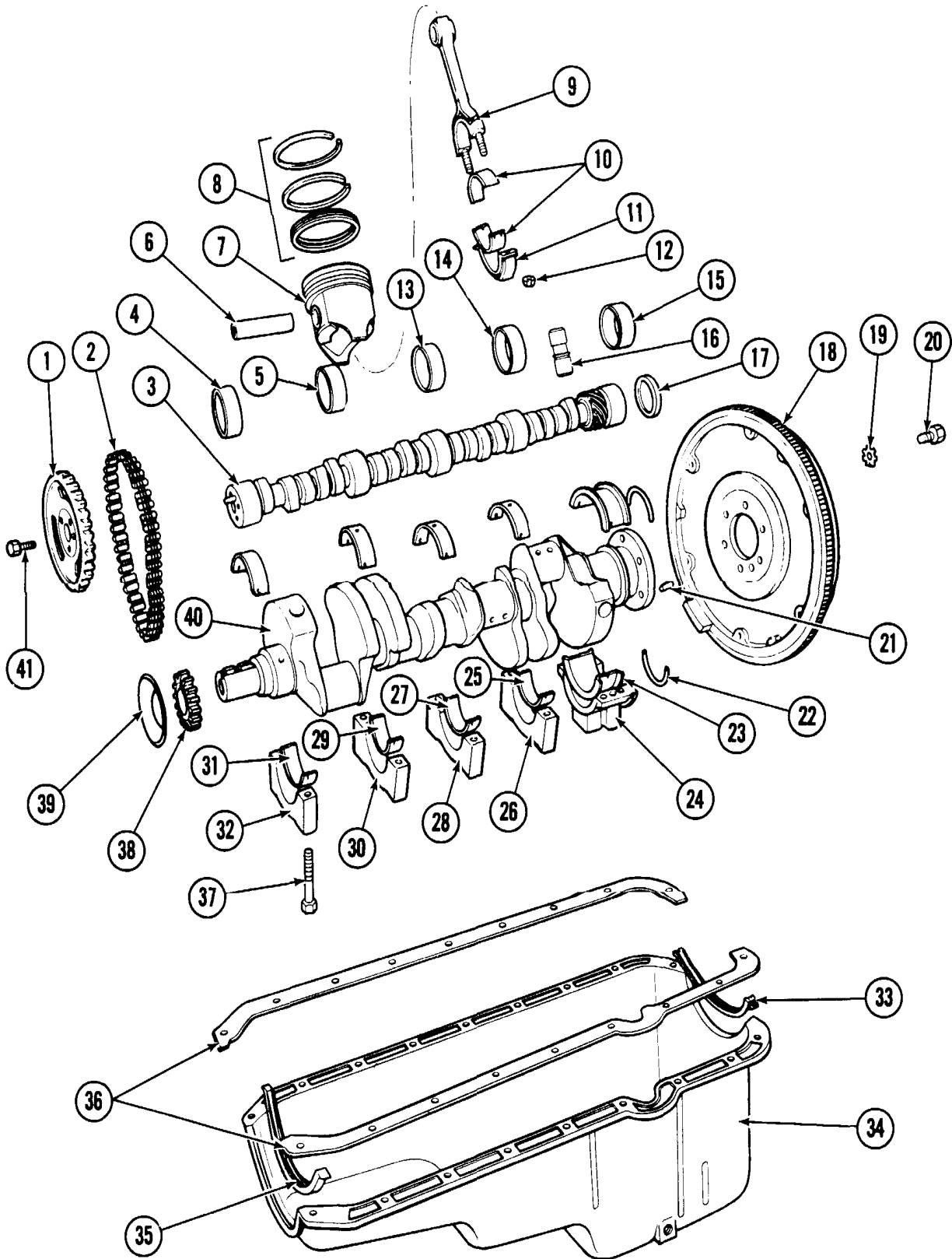
Key	Description	Group	Key	Description	Group
1	Cover, Valve Rocker	0.386	20	Head, Cylinder	0.269
2	Gasket, Valve Rocker Cover	0.423	22	Stud, Intake Manifold--Carburetor to Manifold	3.288
3	Plug, Spark	2.270	23	Valve, Intake	0.296
4	Arm, Valve Rocker	0.333	24	Valve, Exhaust	0.297
5	Ball and Nut Unit, Valve Rocker Arm	0.429	25	Rod, Valve Push	0.426
6	Seal, Valve Stem Oil	0.308	26	Bolt, Exhaust Manifold Clamp--(Standard Stock)	8.900
7	Key, Valve Stem	0.310	27	Clamp, Manifold	3.273
8	Cap, Valve Spring	0.309	28	Gasket, Manifold--Between Intake and Exhaust	3.270
9	Shield, Valve Stem Oil	0.308	29	Nut, Inlet & Exhaust Manifold Stud--(Standard Stock)	8.900
10	Spring, Valve	0.303	30	Stud, Manifold--Exhaust Flange to Manifold	3.275
11	Stud, Valve Rocker Arm Ball	0.429	31	Packing, Exhaust Pipe	3.611
12	Plug--(Standard Stock)	8.971	32	Stud, Manifold--Intake to Exhaust	3.275
13	Bolt--(Standard Stock)	8.900	33	Manifold, Exhaust	3.601
14	Lockwasher (Standard Stock)	8.931	34	Gasket, Manifold--Intake and Exhaust to Block	3.270
15	Outlet, Water	1.153	35	Stud, Inlet and Exhaust Clamp	3.275
16	Gasket, Water Outlet	1.154	36	Manifold, Intake	3.265
17	Thermostat, Motor	1.246	37	Gasket, Cylinder Head	0.289
18	Housing, Thermostat	1.251	38	Bolt, Cylinder Head	0.292
19	Gasket, Thermostat Housing	1.252			



307 ENGINE BLOCK, MANIFOLD AND PUMPS

Key	Part Name	Group No.
1	— PUMP ASM., Fuel	3.900
2	— SCREW, Fuel Pump Mounting	3.900
3	— GASKET, Fuel Pump Flange	3.904
4	— PLATE, Fuel Pump Mounting	3.901
5	— GASKET, Fuel Pump Mounting Plate	3.904
6	— ROD, Fuel Pump Push	3.935
7	— THERMOSTAT, Engine Water	1.246
8	— GASKET, Water Outlet	1.154
9	— OUTLET, Water	1.153
10	— STUD, Intake Manifold to Carb.	3.288
11	— GASKET, Carb. to Manifold	3.726
12	— CONTROL, Distributor Vacuum	2.410
13	— CAP, Distributor	2.361
14	— DISTRIBUTOR ASM.	2.361
15	— CLAMP, Distributor Hold Down	2.363
16	— MANIFOLD, Intake	3.265
17	— GASKET, Intake Manifold	3.270
18	— BLOCK, Engine	0.033
19	— GAUGE, Oil Level Indicator	1.516
20	— TUBE, Oil Level Indicator - Upper	1.516
21	— HOUSING, Flywheel and Clutch.	0.683
22	— FORK, Clutch	0.795
23	— COVER, Clutch Housing	0.679
24	— PUMP ASM., Oil	1.652
25	— SHAFT, Distributor to Oil Pump.	2.372
26	— PLUG, Cyl. Block Water Drain (1/4" - 18)	8.971
27	— GASKET, Water Pump to Block	1.079
28	— GASKET, Crankcase Front End Cover	0.207
29	— COVER, Crankcase Front End	0.206
30	— PUMP ASM., Water	1.069
31	— BALANCER, Harmonic	0.659
32	— FAN, Engine	1.064
33	— SPACER, Engine Fan	1.064
34	— PULLEY, Engine Fan	1.062
35	— ADAPTER, Oil Filter & By-Pass	1.837
36	— BOLT, Oil Filter Adapter (5/16"-18 x 1 1/8")	1.837
37	— FILTER ASM., Oil	1.836

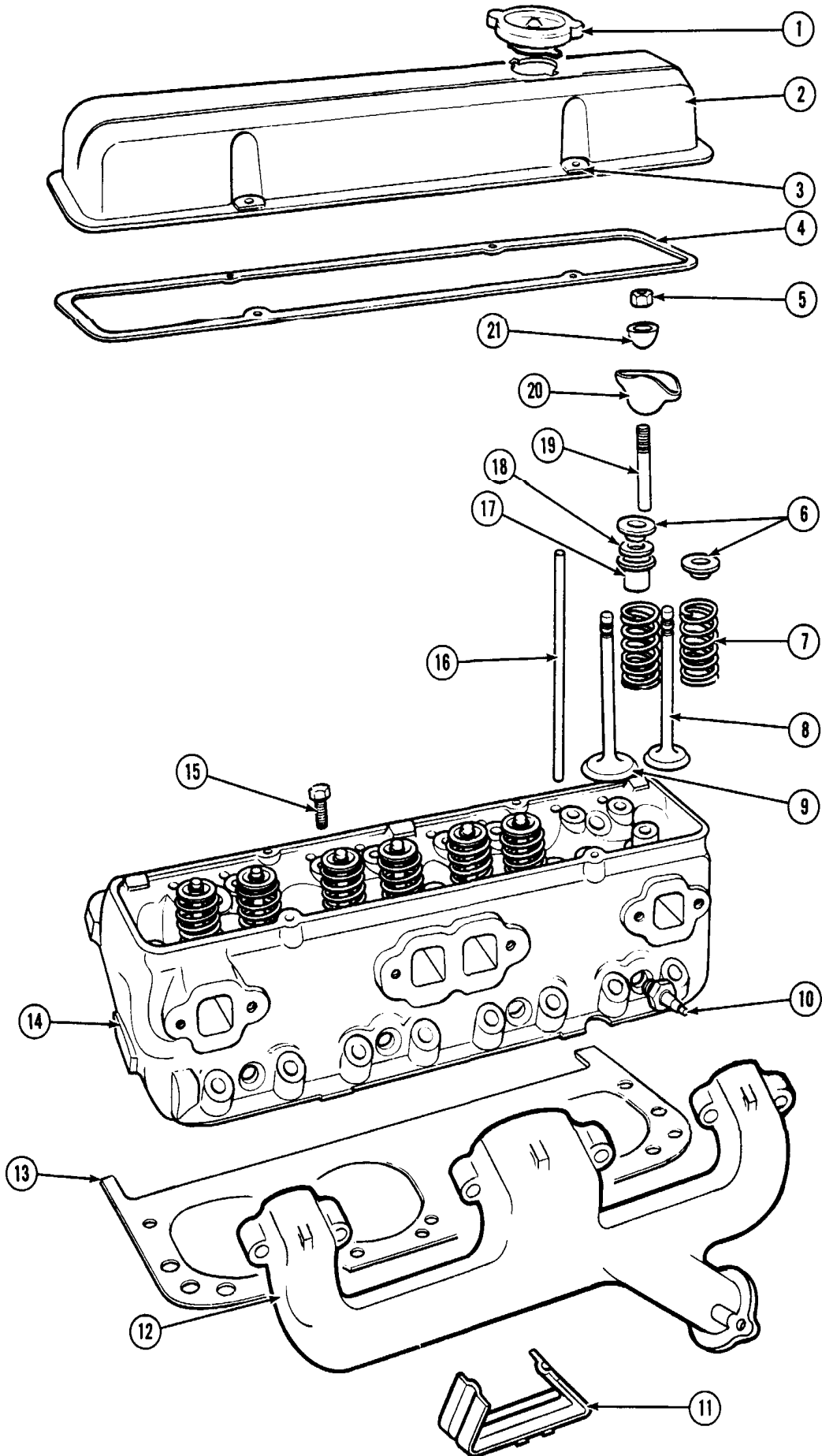
307 ENGINE BLOCK, MANIFOLD AND PUMPS



307 ENGINE CRANKSHAFT, CAMSHAFT AND OIL PAN

Key	Part Name	Group No.
1	— SPROCKET, Camshaft	0.736
2	— CHAIN, Timing	0.724
3	— CAMSHAFT, Engine	0.519
4	— BEARING, Camshaft - Front	0.546
5	— BEARING, Camshaft - Front Intermediate	0.546
6	— PIN, Piston N.S.S. Part Of Key #7	0.636
7	— PISTON AND PIN ASM.	0.629
8	— RING SET, Piston	0.643
9	— ROD ASM., Connecting	0.603
10	— BEARING PKG., Connecting Rod	0.616
11	— BEARING CAP, Connecting Rod (Part of #9)	N.S.
12	— NUT, Connecting Rod Bearing Cap (3/8" - 24)	0.626
13	— BEARING, Camshaft - Center	0.546
14	— BEARING, Camshaft - Rear Intermediate	0.546
15	— BEARING, Camshaft - Rear	0.546
16	— LIFTER, Valve	0.459
17	— PLUG, Camshaft Bearing Hole	0.553
18	— FLYWHEEL, Engine	0.666
19	— LOCKWASHER (7/16" External Tooth)	8.932
20	— BOLT (7/16" - 20 x 1")	8.900
21	— DOWEL PIN, Flywheel	0.685
22	— SEAL, Crankshaft Rear Bearing Oil	0.137
23	— BEARING PKG., Crankshaft - Rear	0.096
24	— CAP, Crankshaft Rear Bearing	0.095
25	— BEARING PKG., Crankshaft - Rear Intermediate	0.096
26	— CAP, Crankshaft Bearing	0.095
27	— BEARING PKG., Crankshaft - Center	0.096
28	— CAP, Crankshaft Bearing	0.095
29	— BEARING PKG., Crankshaft - Front Intermediate	0.096
30	— CAP, Crankshaft Bearing	0.095
31	— BEARING PKG., Crankshaft - Front	0.096
32	— CAP, Crankshaft Bearing	0.095
33	— SEAL, Oil Pan - Rear	1.429
34	— PAN, Engine Oil	1.426
35	— SEAL, Oil Pan - Front	1.429
36	— GASKET PKG., Oil Pan	1.429
37	— BOLT, Crankshaft Bearing Cap	0.056
38	— SPROCKET, Crankshaft	0.728
39	— OIL SLINGER	N.S.
40	— CRANKSHAFT	0.646
41	— BOLT (5/16" - 18 x 7/8")	8.900

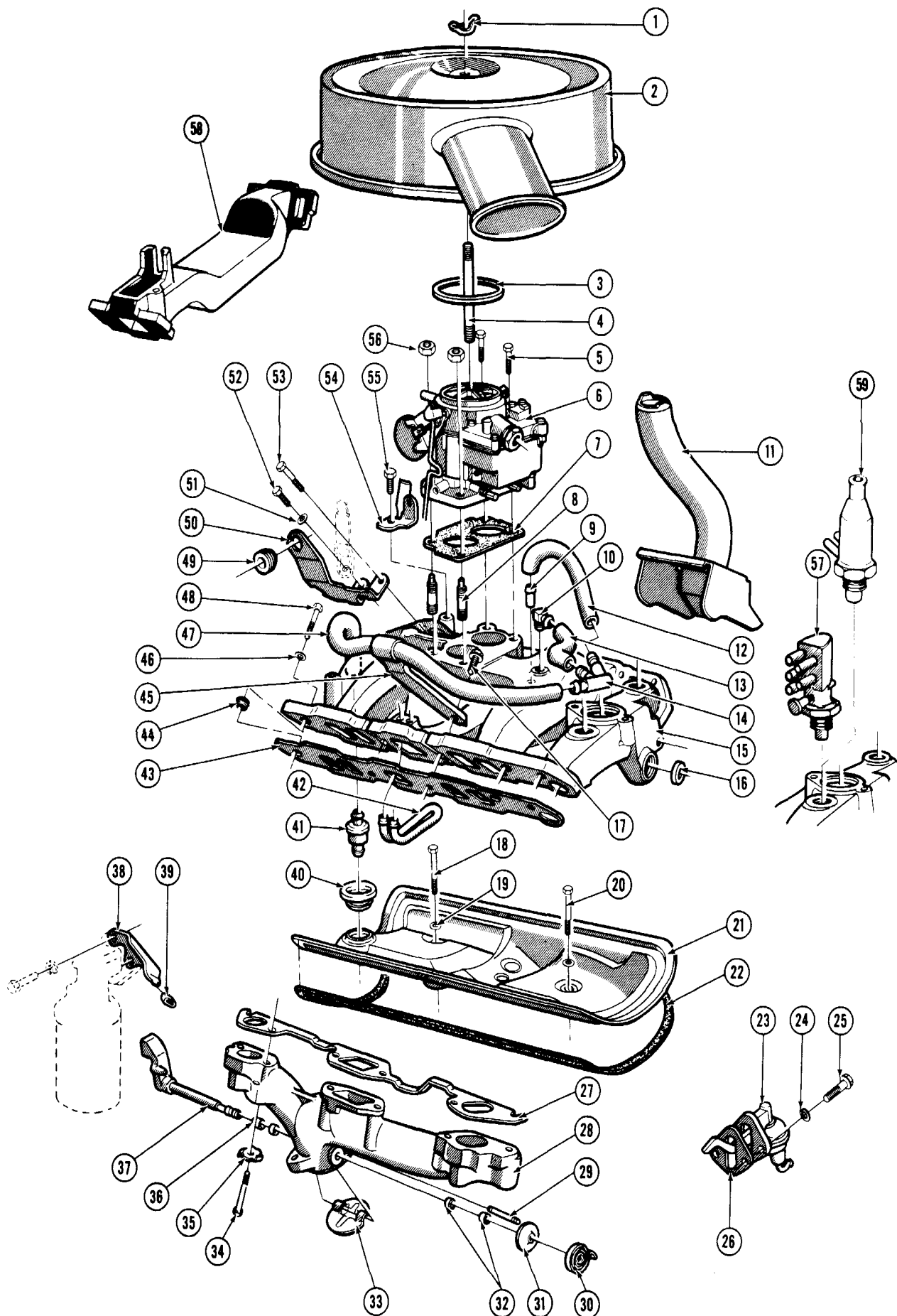
307 ENGINE CRANKSHAFT, CAMSHAFT AND OIL PAN



307 ENGINE CYLINDER HEAD AND MANIFOLD

Key	Part Name	Group No.
1	— CAP, Oil Filler	1.758
2	— COVER, Valve Rocker Arm	0.386
3	— REINFORCEMENT, Valve Rocker Cover	0.413
4	— GASKET, Valve Rocker Arm Cover.	0.423
5	— NUT, Valve Push Rod Adjusting.	0.429
6	— CAP, Valve Spring	0.309
7	— SPRING, Valve	0.303
8	— VALVE, Exhaust	0.297
9	— VALVE, Intake	0.296
10	— SPARK PLUG	2.270
11	— SHIELD, Spark Plug Wires	2.251
12	— MANIFOLD ASM., Exhaust	3.601
13	— GASKET, Cylinder Head	0.289
14	— HEAD ASM., Cylinder	0.269
15	— BOLT, Cylinder Head	0.293
16	— ROD, Valve Push.	0.426
17	— SHIELD, Valve Stem Oil	0.308
18	— SEAL, Valve Stem Oil	0.308
19	— STUD, Valve Push Rod Adjusting	0.429
20	— ARM, Valve Rocker.	0.333
21	— BALL, Valve Rocker Arm Part of Key 20.	0.333

307 ENGINE CYLINDER HEAD AND MANIFOLD

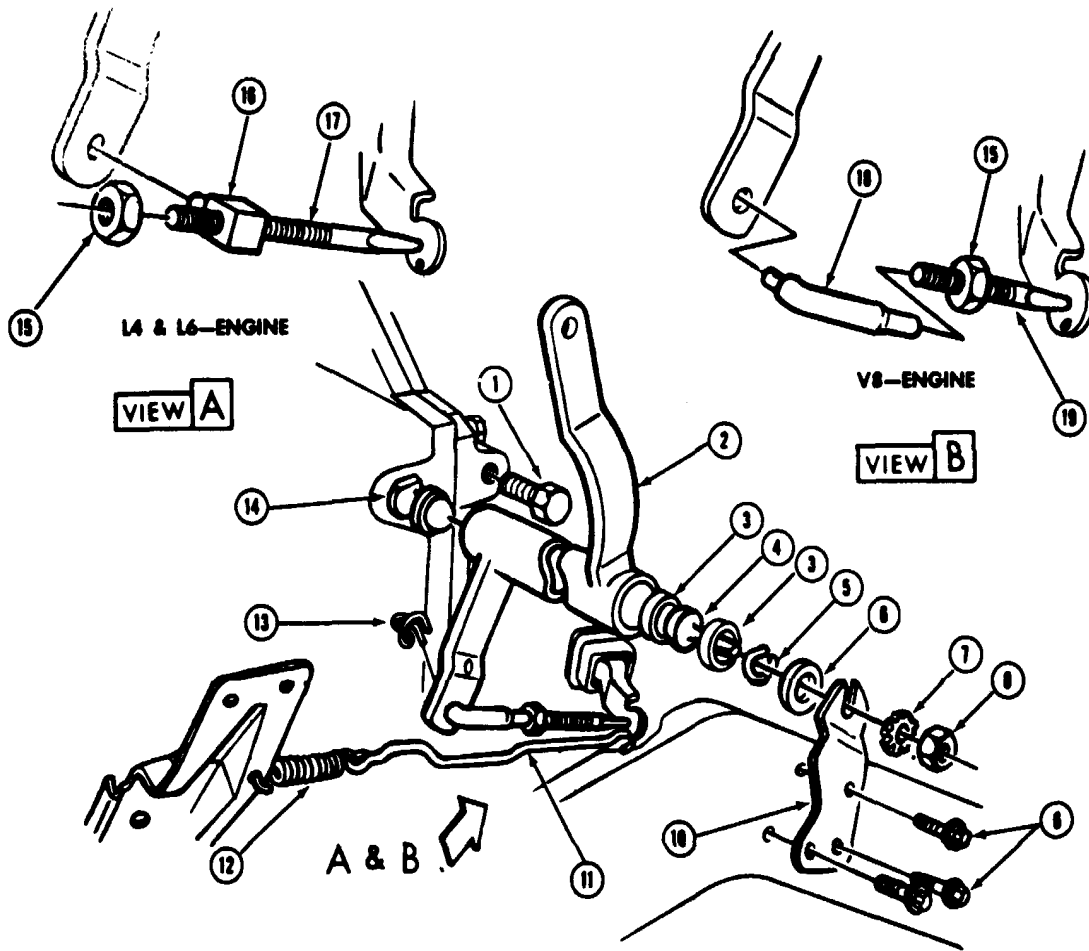
**8-CYL. ENGINE FUEL & EXHAUST PARTS**



VENTURA II PARTS CATALOGUE

Key	Part Name	Group No.
1	NUT, Air Cleaner to Carburetor (1/4"-20 Wing)	3.403
2	CLEANER & SILENCER, Carburetor Air	3.402
3	GASKET, Air Cleaner to Carburetor	3.403
4	STUD, Air Cleaner to Carburetor	3.403
5	BOLT, Carb. to Manifold (5/16"-18 x 1 1/4")	8.900
6	CARBURETOR ASSEMBLY	3.725
7	GASKET, Carb. to Manifold	3.726
8	STUD, Carb. to Manifold (5/16"-18 x 2 1/8"-Hollow)	3.288
9	NIPPLE, Crankcase Vent Hose to Manifold (1 1/16"-Press In)	1.745
10	ELBOW, Crankcase Vent Hose to Manifold	1.745
11	PIPE & STOVE ASM., Carb. Air Heater	3.417
12	HOSE, Crankcase Vent Connector to Fitting	1.762
13	HOSE, Crankcase Vent Connector to Fitting (5/32" I.D. x 3 1/4")	1.762
14	CONNECTOR, Crankcase Vent Hose	1.745
15	MANIFOLD, Intake	3.265
16	SEAL, Intake Manifold to Timing Chain Cover (5/8" I.D. x 1" O.D.)	0.213
17	BOLT, Bracket & Manifold to Cylinder Head (3/8"-16 x 1 3/8")	N.S.
18	BOLT, Push Rod Cover to Cyl. Block (5/16"-18 x 2 1/2")	8.900
19	GASKET, Push Rod Cover to Cyl. Block (5/16"-Round)	0.443
20	BOLT, Push Rod Cover to Cyl. Block (5/16"-18 x 2")	8.900
21	COVER, Valve Push Rod	0.439
22	GASKET, Valve Push Rod Cover	0.443
23	PUMP ASM., Fuel (Package)	3.900
24	WASHER, Fuel Pump to Timing Chain Cover	3.901
25	BOLT, Fuel Pump to Timing Chain Cover (3/8"-16 x 1 1/4")	3.901
26	GASKET, Fuel Pump Flange	3.904
27	GASKET, Exhaust Manifold	3.270
28	MANIFOLD, Exhaust	3.601
29	PIN, Heat Control Valve Anchor	3.647
30	THERMOSTAT, Heat Control Valve	3.640
31	BAFFLE, Exhaust Manifold Thermostat	3.641
32	BUSHING, Heat Control Valve	3.646
33	VALVE, Manifold Heat Control	N.S.
34	BOLT, Manifold to Cylinder Head (3/8"-16 x 2 1/2")	8.900
35	LOCK, Exhaust Manifold Bolt	3.604
36	SPACER, Manifold Heat Control Valve	3.641
37	SHAFT, Manifold Heat Valve	N.S.
38	BRACKET, Heat Control Valve Stop	3.641
39	PAD, Manifold Heat Control Valve Stop	3.647
40	GROMMET PKG., Crankcase Vent	1.745
41	VALVE PKG., Crankcase Vent	1.745
42	TUBE, Intake Manifold Choke Heat (Internal)	3.603
43	GASKET, Intake Manifold	3.270
44	RETAINER, Intake Manifold Gasket	3.270
45	BRACKET, Crankcase Vent Hose	1.762
46	WASHER, Manifold to Cyl. Head (13/32" I.D. x 3/4" O.D.)	3.275
47	HOSE, Crankcase Outlet Valve to Connector (5/16" I.D. x 29")	1.762
48	BOLT, Intake Manifold to Cyl. Head (3/8"-16 x 1 1/2")	3.275
49	BUSHING, Throttle Control Cross-Shaft Engine Bracket	3.463
50	BRACKET ASM., Throttle Control Cross-Shaft Engine	3.463
51	WASHER, Bracket to Cyl. Head (13/32" I.D. x 3/4" O.D.)	3.463
52	BOLT, Bracket to Cyl. Head (3/8"-16 x 3/4")	8.900
53	BOLT, Bracket to Cyl. Head (3/8"-16 x 1 1/2")	3.275
54	BRACKET, Throttle Return Spring Mounting	3.459
55	BOLT, Mounting Bracket to Manifold (5/16"-18 x 5/8")	8.900
56	NUT, Carb. to Manifold Vacuum Stud (5/16"-18)	8.916
57	SWITCH, Thermostatic Vacuum	2.410
58	MANIFOLD, Crossover Exh. Choke Coil Heat (Ram Air & S.D.)	3.265
59	VALVE, Thermostatic Purge	3.130

8-CYL. ENGINE FUEL & EXHAUST PARTS

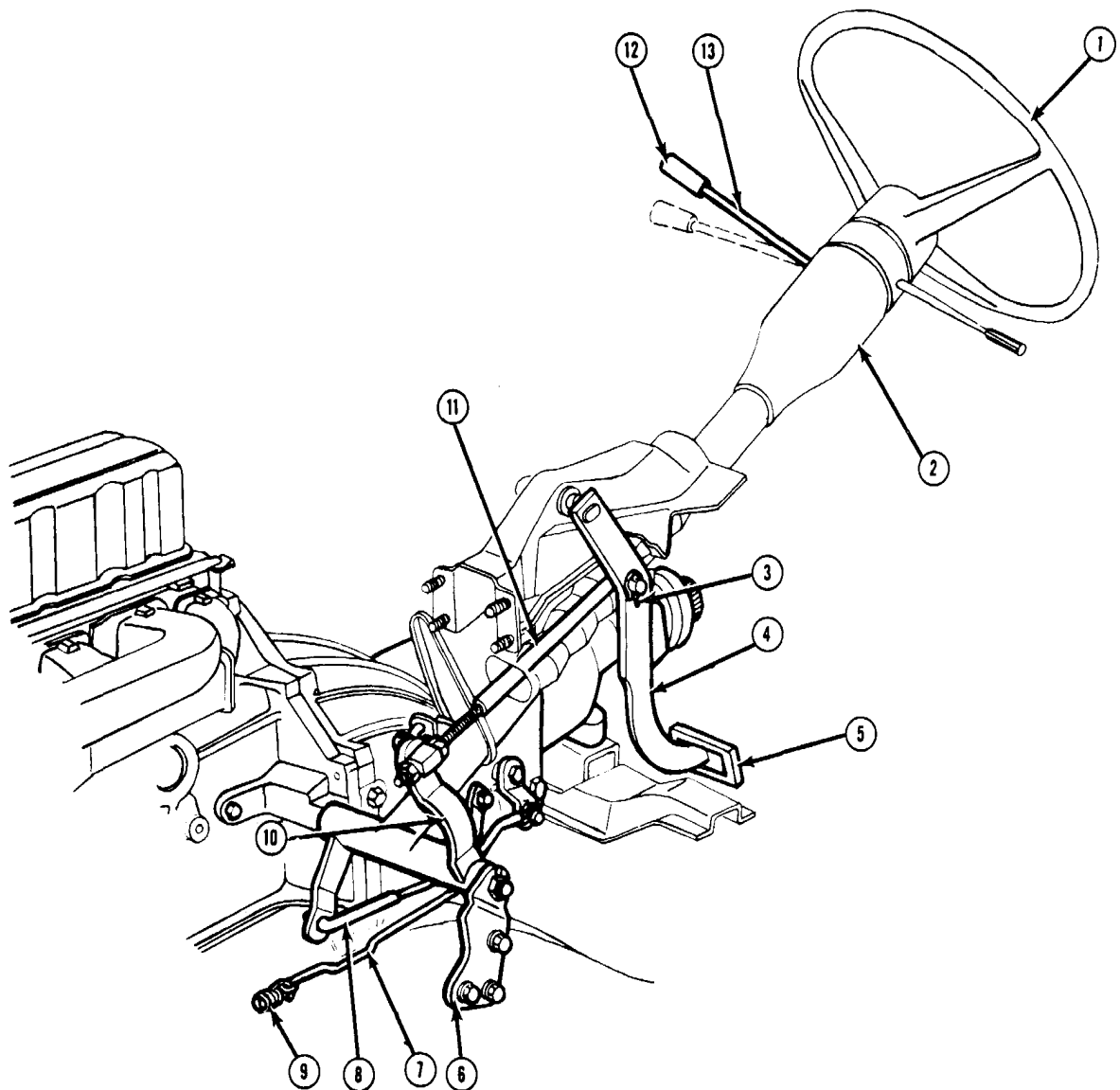


1971-74 CLUTCH SHAFT AND PUSHROD

Key	Description	Part No.	Group
1	BOLT, 1/2-13 x 7/8 (L-6 Eng. Only)	S.S.	8.900
2	LEVER AND SHAFT, Clutch Release	3998652	0.852
3	SEAT, Clutch Lever Shaft Ball Stud	3743349	0.851
4	STUD, Clutch Lever Ball	See Data	0.851
5	SPRING, Clutch Shaft Ball Stud Retaining	3750696	0.851
6	WASHER, Clutch Lever Shaft Ball Stud	3743360	0.851
7	LOCKWASHER — 3/8	S.S.	8.932
8	NUT — 3/8-16	S.S.	8.915
9	SCREW — 5/16-18 x 1 1/8	S.S.	8.977
10	BRACKET, Clutch Lever and Shaft	3932760	0.852
11	EXTENSION, Clutch Fork Push Rod Pull Back Spring	See Data	0.846

Key	Description	Part No.	Group
12	SPRING, Clutch Fork Push Rod Pull Back	See Data	0.844
13	CLIP (Std. Stock)	3749084	8.996
14	STUD, Clutch Lever Ball	3866568	0.851
15	NUT — 3/8-16	S.S.	8.916
16	SWIVEL, Clutch Fork Push Rod	3840845	0.787
17	ROD, Clutch Fork Adjusting Push	See Data	0.787
18	ROD, Clutch Fork Adjusting Push	See Data	0.787
19	ROD, Clutch Fork Adjusting Push	See Data	0.787

S.S.—Standard Stock



1971-74 CLUTCH DETAILS

Key	Description	Part No.	Group
1	WHEEL ASSEMBLY, Steering	See Data	6.513
2	COLUMN ASSEMBLY, Steering	See Data	6.518
3	RETAINER — Std. Stock	3749084	8.996
4	PEDAL ASSEMBLY, Clutch	6258554	0.830
5	COVER, Brake Pedal Pad and Clutch Pedal	3921648	4.630
6	BRACKET, Clutch Lever and Shaft	3932760	0.852
7	EXTENSION, Clutch Fork Push Rod Pull Back Spring	See Data	0.846
8	ROD, Clutch Fork Adjusting Push	See Data	0.787
9	SPRING, Clutch Fork Push Rod Pull Back	See Data	0.844
10	LEVER AND SHAFT, Clutch Release	3998652	0.852
11	ROD, Clutch Pedal Push	See Data	0.854
12	KNOB, Transmission Control Lever	See Data	4.006
13	LEVER, Transmission Control	See Data	4.006