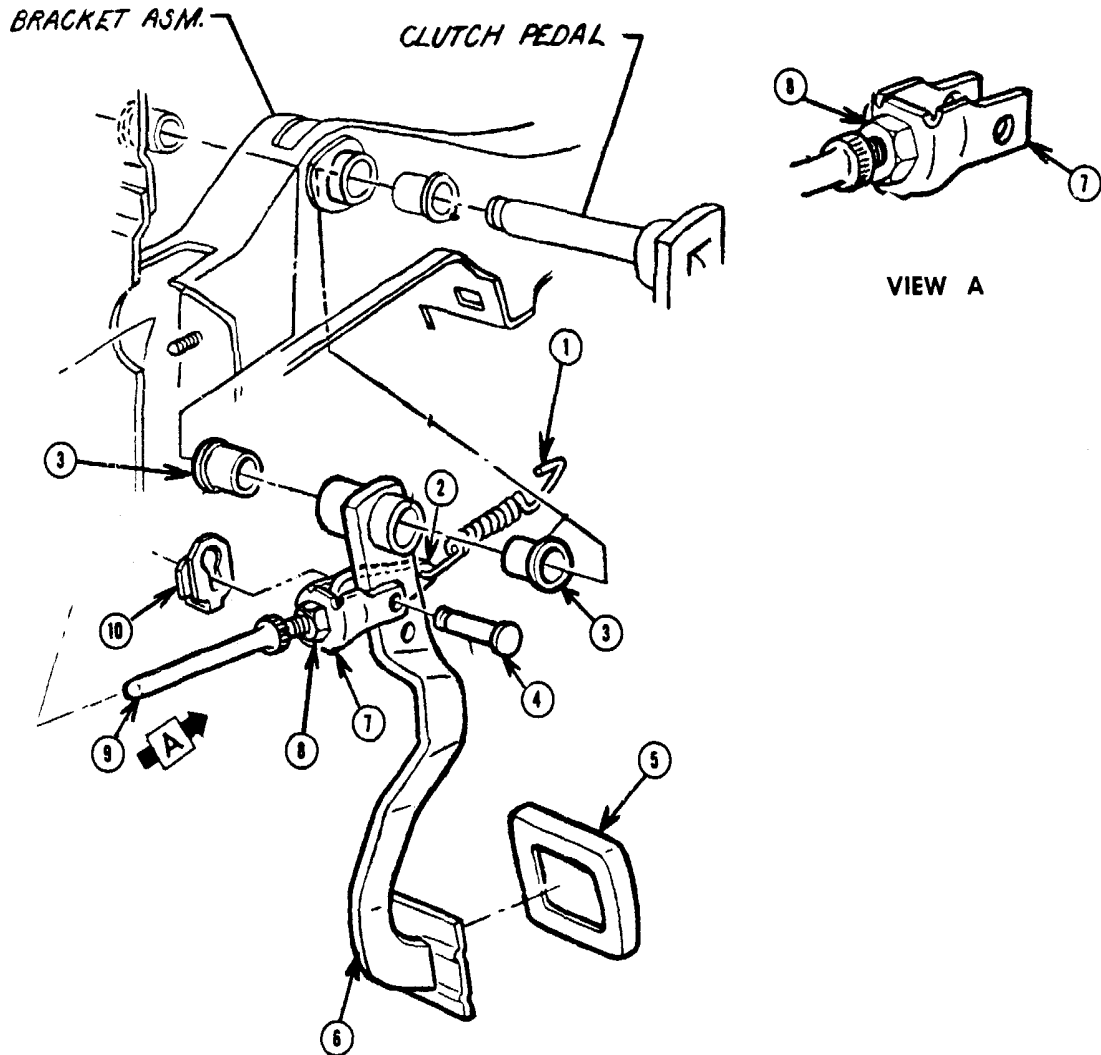


**MORAINE MASTER CYLINDER
(TYPICAL)**

Key	Description	Group
1	Spring, Check Valve	4.657
2	@ Valve, Check.....	4.657
3	@ Insert Pipe Connecting Bolt.....	4.671
4	Valve, Bleeder.....	4.666
5	Bail, Reservoir Cover.....	4.651
6	Cover, Reservoir.....	4.651
7	@ Gasket, Reservoir	4.651
8	Screw, Stop	4.656
9	Reservoir - N.S. S. Part Of Key # 22.....	-
10	Spring, Secondary Piston.....	4.655
11	Retainer, Secondary Piston Spring.....	4.655
12	@ Cup, Piston Primary.....	4.654
13	@ Protector, Piston Primary Cup	4.659
14	Piston, Secondary.....	4.653
15	@ Seal, Brake Master Cylinder Secondary	4.652

Key	Description	Group
16	* Screw, Secondary Piston Extension.....	-
17	* Stop, Secondary Piston.....	-
18	* Spring, Primary Piston.....	-
19	* Retainer, Primary Piston Spring.....	-
20	* Piston, Primary.....	-
21	@ Ring, Primary Piston Retaining.....	4.656
22	@ Cup, Piston Secondary.....	4.654
23	Cylinder Assy.....	4.650
24	Repair Kit - Includes All Part With * & @ Where They Apply.....	4.649

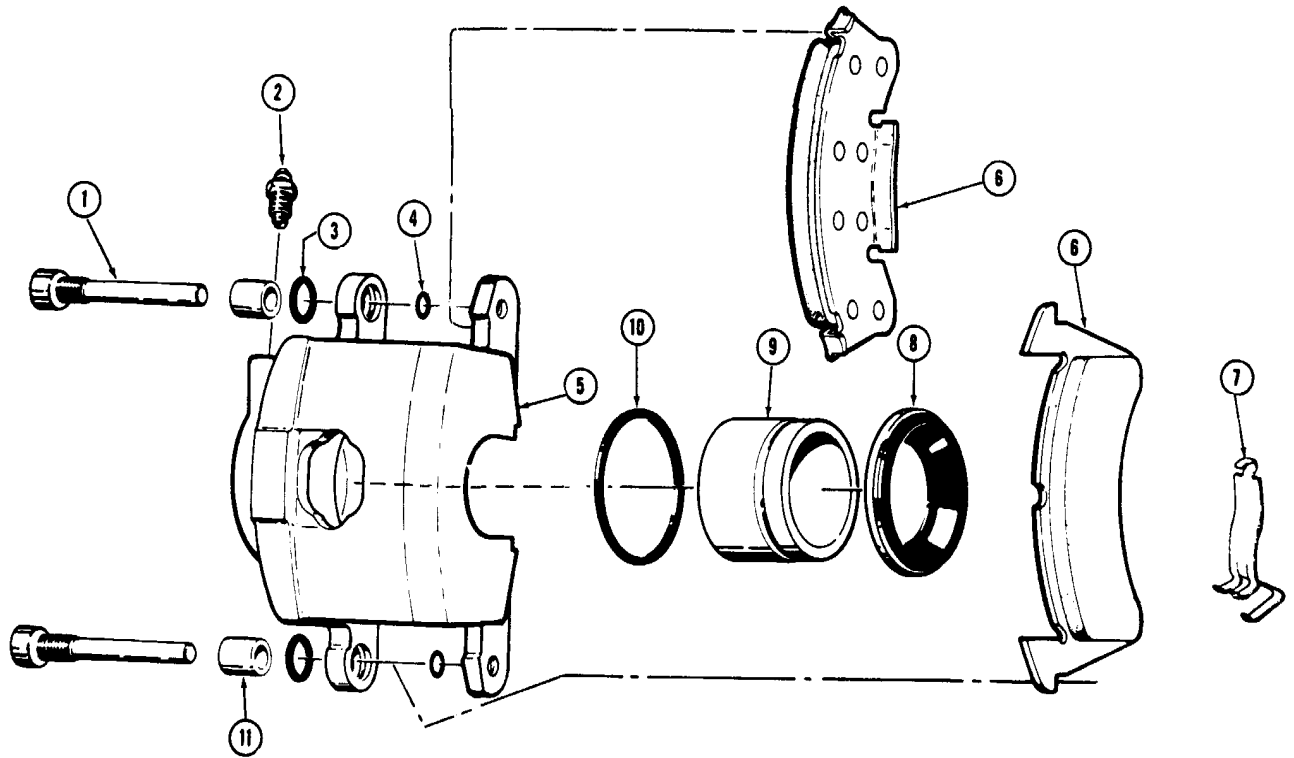
* Serviced Only As Part Of Repair Kit Key # 24
@ Also Serviced As Part Of Repair Kit Key # 24
N.S. - Not Serviced Separately.



BRAKE PEDAL

Key	Description	Part No.	Qty.	Group
1	Spring, Brake Pedal	3850084	1	4.760
2	Extension, Brake Pedal	3841645	1	4.760
3	Bushing, Brake Pedal	3798256	AR	4.626
4	Pin, Brake Pedal	3817879	1	4.658
5	Cover, Brake Pedal Pad—ST	3921648	1	4.630
	—AT	3888682	1	4.630

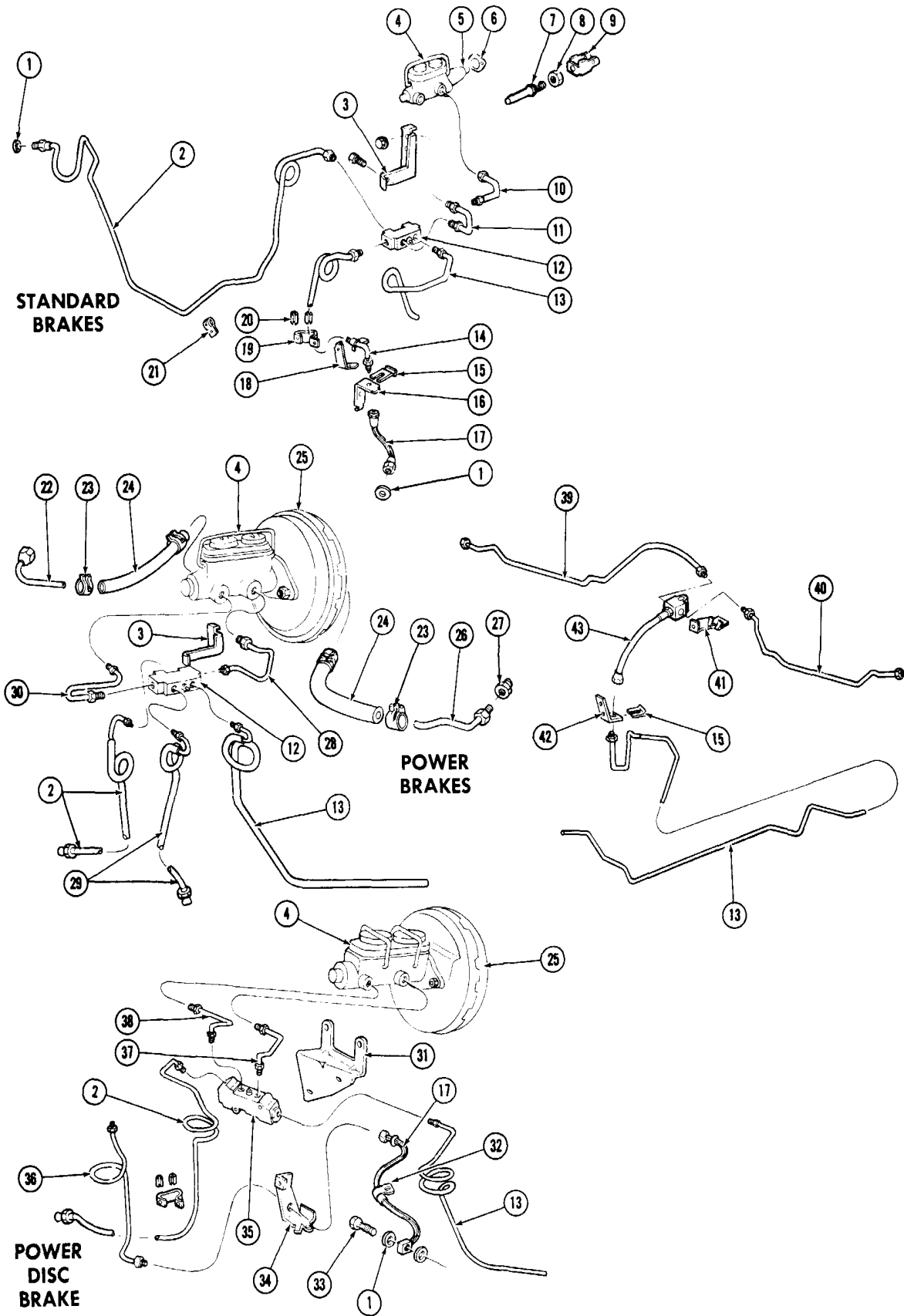
Key	Description	Part No.	Qty.	Group
6	Pedal, Brake —ST	3953287	1	4.625
	—AT	3953291	1	4.625
7	Clevis, Brake Pedal	3953288	1	4.662
8	Nut 3/8 - 24	S.S.	1	8.916
9	Rod, Brake Master Cylinder Push	3790222	1	4.658
10	Retainer, Brake Pedal	3817880	1	4.662



SINGLE PISTON DISC BRAKE CALIPER

Key	Description	Group
1	Bolt Caliper Housing	4.665
2	Valve, Wheel Cylinder Bleeder	4.666
3	Bushing, Caliper Support Bolt—Outer	4.667
4	Bushing, Caliper Support Bolt—Inner	4.667
5	Housing, Serviced as Part of Caliper Assembly —Group 4.665	N.S.S.
6	Shoe and Facing Unit	5.017

Key	Description	Group
7	Spring, Piston Return	4.669
8	Boot, Serviced as Part of Caliper Repair Kit —Group 4.665	N.S.S.
9	Piston	4.668
10	Seal, Serviced as Part of Caliper Repair Kit —Group 4.665	N.S.S.
11	Sleeve, Retainer Bolt Housing	4.665

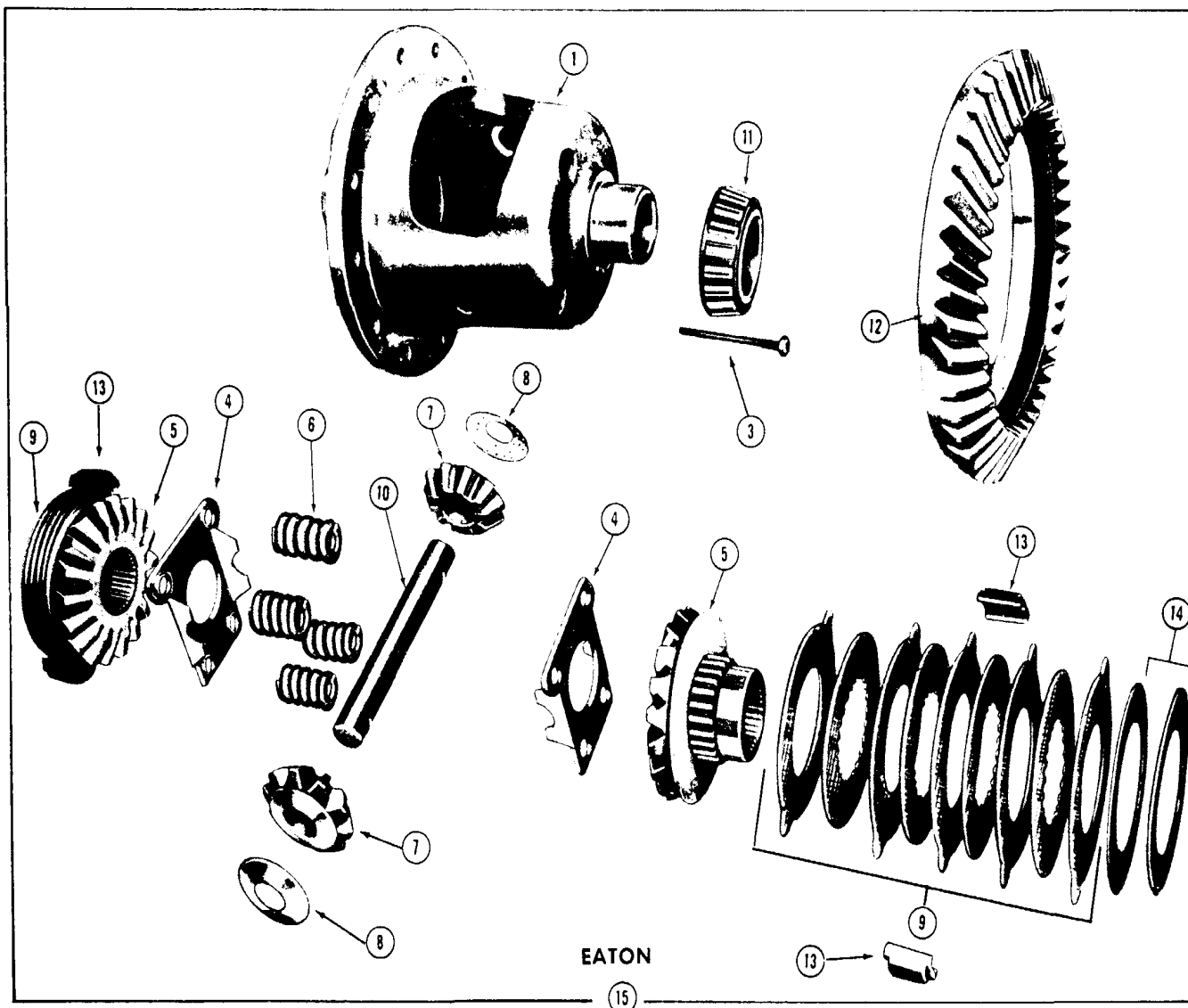


BRAKE SYSTEMS

Key	Part Name	Group No.
1	WASHER, Front Brake Hose Gasket	4.671
2	PIPE ASM. (3/16" O.D. - Cut 69 3/4" from 3696822)	▲8.964
3	BRACKET, Brake Pressure Switch Mtg.	4.874
4	CYLINDER ASM., Brake Master	4.650
5	BOOT, Master Cyl. Push Rod	4.659
6	GASKET, Master Cyl. Mounting	4.648
7	ROD, Master Cyl. Push	4.658
8	NUT (3/8"-24)	8.915
9	CLEVIS, Master Cyl. Push Rod	4.662
10	PIPE ASM. (1/4" O.D. - Cut 8 3/4" from 603827)	▲8.964
11	PIPE ASM. (3/16" O.D. - Cut 7 1/8" from 3696822)	▲8.964
12	DISTRIBUTOR & SWITCH ASM., Brake Pipe	4.874
13	PIPE ASM. (1/4" O.D. - Cut 148" from 603827)	▲8.964
14	PIPE ASM. (3/16" O.D. - Cut 24 3/4" from 3696822)	▲8.964
15	YOKE, Brake Pipe to Bracket	4.681
16	BRACKET, Front Brake Hose	4.681
17	HOSE ASM., Front Brake	4.680
18	BRACKET, Front Brake Pipe	4.681
19	CLIP, Brake Pipe	N.S.
20	GROMMET, Front Brake Pipe	N.S.
21	CLIP, Front Brake Pipe to Crossmember	N.S.
22	PIPE ASM., Vac. Cyl. to Int. Manifold (8 Cyl.)	N.S.
23	CLAMP, Hose	1.166
24	HOSE, Vacuum (11/32" I.D. - Cut as required)	8.962
25	CYLINDER ASM., Vacuum and Master	4.901
26	PIPE ASM., Vac. Cyl. to Int. Manifold (6 Cyl.)	4.930
27	FITTING, Vacuum	4.931
28	PIPE ASM. (1/4" O.D. - Cut 11 3/4" from 603827)	▲8.964
29	PIPE ASM. (3/16" O.D. - Cut 27 1/4" from 3696822)	▲8.964
30	PIPE ASM., Master Cyl. to Distributor & Switch	4.685
31	BRACKET, Brake Combination Valve Mtg.	4.690
32	CLIP, Front Brake Hose	4.686
33	BOLT, Brake Hose	4.665
34	BRACKET, Front Brake Hose	4.681
35	VALVE ASM., Brake Combination	4.690
36	PIPE ASM. (3/16" O.D. - Cut 61" from 3696822)	▲8.964
37	PIPE ASM., Brake Combination Valve - Rear	4.685
38	PIPE ASM., Brake Combination Valve - Front	4.685
39	PIPE ASM. (3/16" O.D. - Cut 35 3/4" from 3696822)	▲8.964
40	PIPE ASM. (3/16" O.D. - Cut 24 5/8" from 3696822)	▲8.964
41	BRACKET, Rear Brake Hose Axle	4.681
42	BRACKET, Rear Brake Hose	4.681
43	HOSE ASM., Rear Brake	4.680

▲Tubing in 25 foot rolls. Cut, form, flare and build up with appropriate standard fittings.

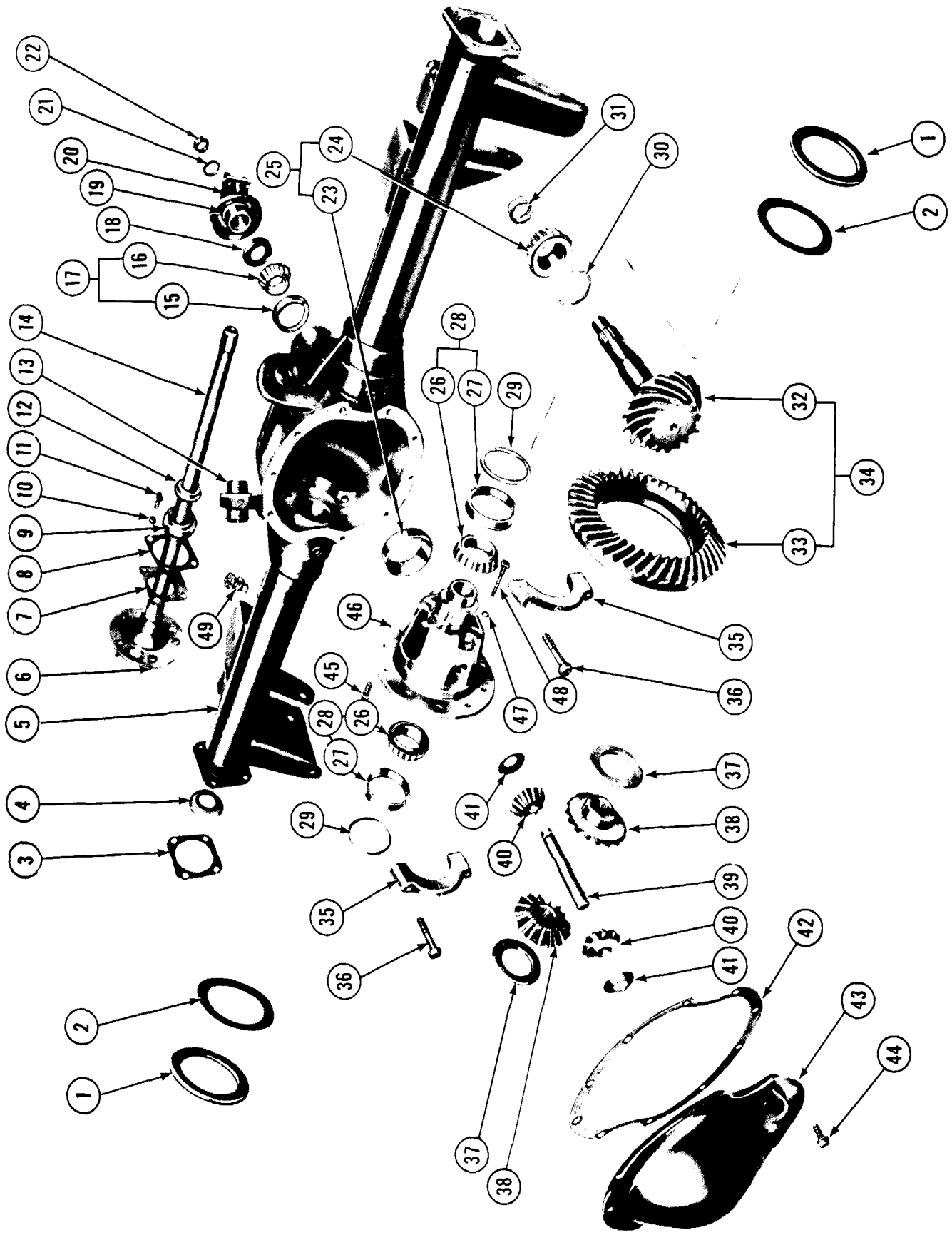
BRAKE SYSTEMS



POSITRACTION

Key	Description	Group
1	Case, Differential	5.510
2	Cage, Differential Clutch Friction Plate	5.511
3	Screw, Differential Pinion Shaft Lock	5.518
4	Plate, Differential Clutch Pressure	5.511
5	Gear, Differential Side	5.528
6	Spring, Differential Clutch Pressure Plate	5.511
7	Pinion, Differential Side	5.526
8	Washer, Differential Pinion Thrust	5.542

Key	Description	Group
9	Plate & Disc Unit, Differential	5.511
10	Shaft, Differential Side Pinion	5.517
11	Bearing Assy., Differential Side	5.536
12	Gear—N.S.S. Part of Gear and Pinion Unit	5.529
13	Guide, Differential Power Lock Disc	5.511
14	Shim, Differential Clutch Disc	5.511
15	Differential and Case Assy., Rear Axle	5.510
	N.S.S.—Not Serviced Separately	



REAR AXLE, DIFFERENTIAL CARRIER & TUBES ASSEMBLY

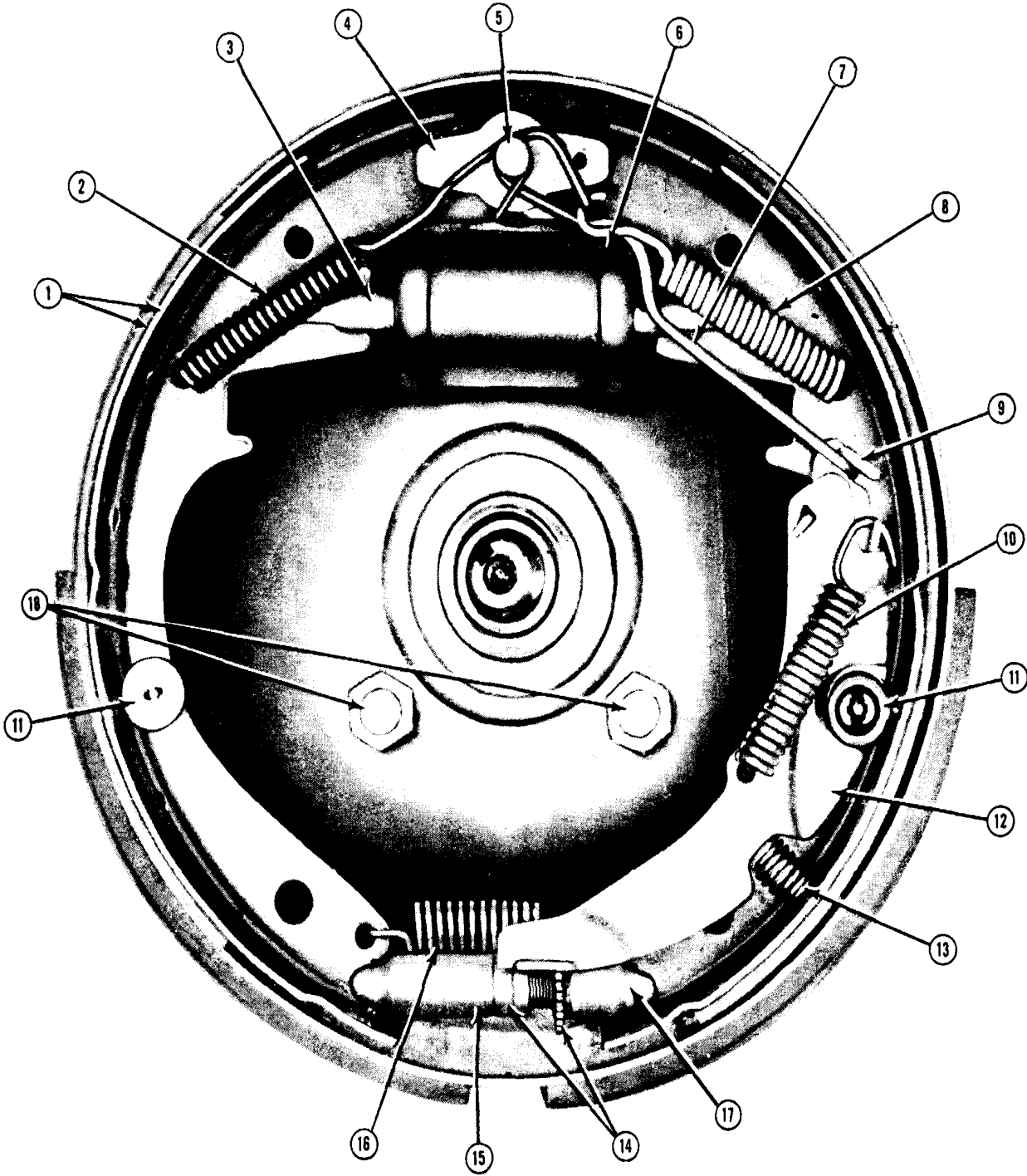


VENTURA II PARTS CATALOGUE

Key	Part Name	Group No.
1	SPACER, Side Bearing	5.537
2	SHIM, Side Bearing Adjusting	5.537
3	GASKET, Backing Plate to Rear Axle Housing	5.002
4	SEAL ASM., Rear Axle Shaft Oil	5.822
5	CARRIER, CAPS & TUBES ASM., Differential	5.387
6	BOLT, Wheel to Hub	5.812
7	RETAINER, Rear Axle Shaft Wheel Bearing - Outer	5.816
8	GASKET, Rear Wheel Bearing Retainer to Brake Plate	5.002
9	BEARING ASM., Rear Axle Shaft	5.855
10	NUT, Rear Brake to Axle (3/8-24)	5.002
11	BOLT, Rear Brake to Axle	5.002
12	RETAINER, Rear Axle Wheel Bearing - Inner	5.816
13	BUSHING ASM., Rear Axle Control Arm - On Housing	5.381
14	SHAFT, Rear Axle	5.420
15	RACE, Rear Axle Drive Pinion - Front	N.S.
16	BEARING, Rear Axle Drive Pinion - Front	N.S.
17	BEARING ASM., Rear Axle Drive Pinion - Front	5.447
18	SEAL ASM., Differential Drive Pinion	5.469
19	SLINGER, Rear Axle Pinion Flange (1964-65 T/6-T/8) SHIELD, Drive Pinion Splash	5.468
20	FLANGE ASM., Rear Axle Pinion (Inc. #19)	5.545
21	WASHER, Pinion Flange Retaining	5.595
22	NUT, Drive Pinion Flange Retaining	5.595
23	RACE, Drive Pinion - Rear	N.S.
24	BEARING, Drive Pinion - Rear	N.S.
25	BEARING ASM., Drive Pinion - Rear	5.484
26	RACE, Differential Side	N.S.
27	BEARING, Differential Side	N.S.
28	BEARING ASM., Differential Side	5.536
29	SHIM, Side Bearing Adjusting (Production Type) (See 5.537)	N.S.
30	SHIM, Differential Pinion Bearing	5.460
31	SPACER, Differential Drive Pinion Bearing	5.453
32	PINION, Rear Axle Drive	N.S.
33	GEAR, Rear Axle Ring	N.S.
34	RING GEAR & PINION PKG., Differential	5.529
35	CAP, Differential Carrier Bearing (Part of #5)	N.S.
36	BOLT, Bearing Cap	5.506
37	WASHER, Differential Side Gear Thrust	5.543
38	GEAR, Differential Side (▲)	5.528
39	SHAFT, Differential Pinion (1964-65) T/6-T/8)	5.517
40	GEAR, Differential Pinion (▲)	5.526
41	WASHER, Differential Pinion Thrust	5.542
42	GASKET, Differential Carrier Cover	5.399
43	COVER, Differential Carrier	5.398
44	BOLT, Cover to Carrier and Tubes	5.398
45	BOLT, Ring Gear to Case (3/8" - 24 x 7/8")	8.900
46	CASE, Differential	5.510
47	LOCKWASHER, Pinion Shaft Lock Screw (5/16")	8.932
48	SCREW, Pinion Shaft Lock	5.518
49	VENT ASM., Rear Axle	5.387

(▲) NOTE: GEAR PKG., DIFFERENTIAL SIDE & PINION—5.527

REAR AXLE, DIFFERENTIAL CARRIER & TUBES ASSEMBLY



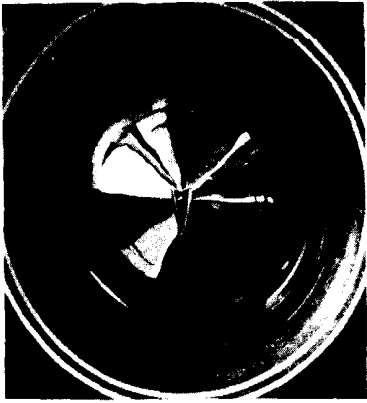
DRUM BRAKE

Key	Description	Group
1	Shoe & Facing Unit, Brake	5.017
2	Spring, Brake Shoe Pull Back - Primary	5.026
3	Rod, Wheel Cylinder To Brake Shoe Thrust	4.675
4	Plate, Brake Shoe Guide	5.045
5	Pin, Brake Shoe Anchor	5.055
6	Cylinder, Wheel Brake	4.665
7	Link, Brake Shoe Automatic Adjusting	5.105
8	Spring, Brake Shoe Pull Back - Secondary	5.026
9	Pivot, Brake Shoe Automatic Adjusting Lever	5.103
10	Spring, Brake Shoe Automatic Adjusting Lever - Override	5.107
11	Pin Unit, Brake Shoe Hold Down - Incl. Spring	5.043

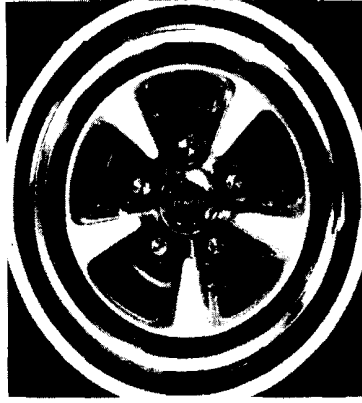
Key	Description	Group
12	Lever, Brake Shoe Automatic Adjusting	5.103
13	Spring, Brake Shoe Automatic Adjusting Lever - Return	5.107
14	Screw, Brake Shoe Adjusting - Also Part of Key 19	5.110
15	Nut, Brake Shoe Adjusting Screw - Also Part of Key 19	5.141
16	Spring, Brake Shoe Adjusting Screw	5.026
17	Socket, Brake Shoe Adjusting Screw	5.111
18	Bolt, Brake Flange Plate	5.002
19	Screw & Nut, Brake Shoe Adjusting	5.110



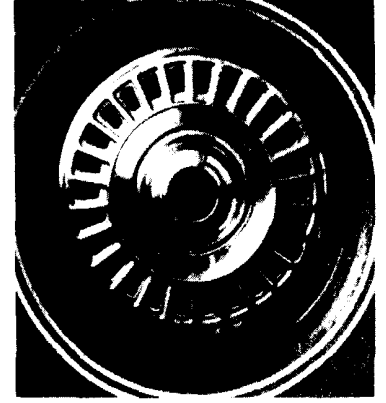
1971-73 WHEEL DISCS



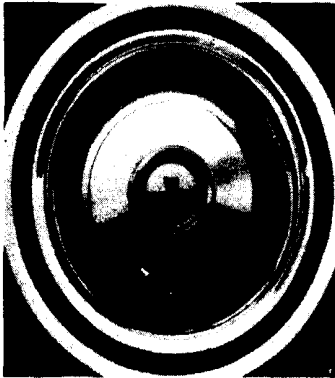
"X" STANDARD
485200
1971-73



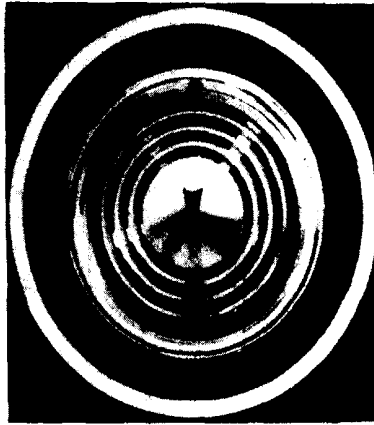
RALLY II
480301 ORNAMENT
WHEEL - SEE GROUP 5.803
TRIM RING - SEE GROUP 5.858
1971-72



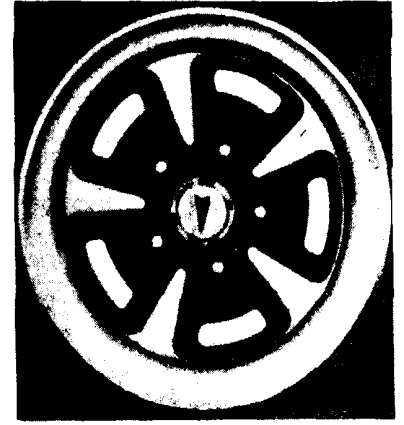
"X" DELUXE
9714122 (984913)
1971-72
(R.P.O. - P01)



STANDARD
488630
1972



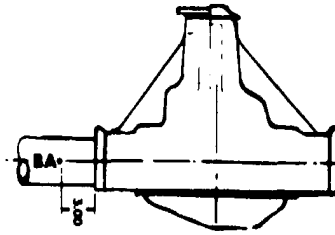
X
488595 (989132)
1973
(R.P.O. - P01)



RALLY II
488953 CAP
WHEEL - GRP. 5.803
TRIM RING - GRP. 5.871
1973

DIFFERENTIAL IDENTIFICATION CODE

LOCATION: THE CODE LETTERS MAY BE FOUND STAMPED 1/4 IN. HIGH ON THE BOTTOM OF THE RIGHT HAND AXLE TUBE APPROXIMATELY 3 IN. FROM THE CARRIER.



YEAR	AXLE CODE	AXLE RATIO	NO. OF GEAR TEETH	RING GEAR	TYPE OF AXLE
1971	GJ	2.56	41:16	8.125	STD.
	GK	3.08	37:12	8.125	STD.
	GR	2.56	41:16	8.125	POS.
	GS	3.08	37:12	8.125	POS.
1972	JG	2.73	41:15	8.125	STD.
	JL	3.08	40:13	8.125	STD.
	JV	2.73	41:15	8.125	POS.
	JW	3.08	40:13	8.125	POS.
	JB	2.73	41:15	8.500	STD.
	JC	3.08	40:13	8.500	STD.
	JN	2.73	41:15	8.500	POS.
	JD	3.08	40:13	8.500	POS.
1973-1974	JA	2.73	41:15	8.500	STD.
	JB	3.08	40:13	8.500	STD.
	JM	2.73	41:15	8.500	POS.
	JN	3.08	40:13	8.500	POS.

ABBREVIATIONS: STD — STANDARD; POS — POSITRACTION

EXAMPLE: NKB218DW

Meaning of Code:

- NK = Part Code Number
- B = Manufacturers Identification
- 218 = Day of year axle was built
- D (or) N = Shift (D=Day or N=Night)
- W = Type of Positraction
(This will appear only if axle is equipped with Positraction)

The third letter is used to identify the axle. In the example the third letter is B. This (B) means that it was manufactured by Buick. The following list identifies all manufacturer identity codes.

- B = Buick
- O = Oldsmobile
- C & G = Chevrolet
- K = McKinnon
- M = McKinnon
- P = Pontiac