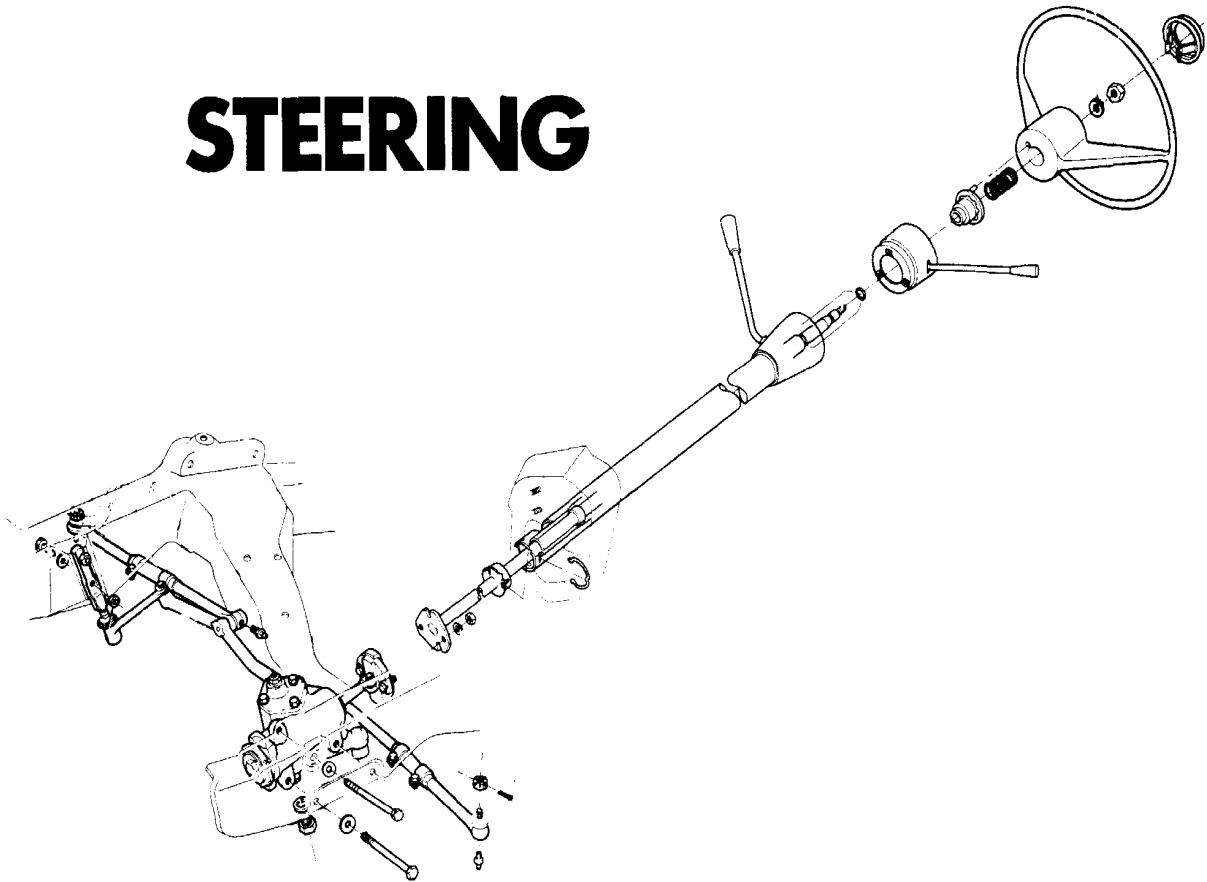
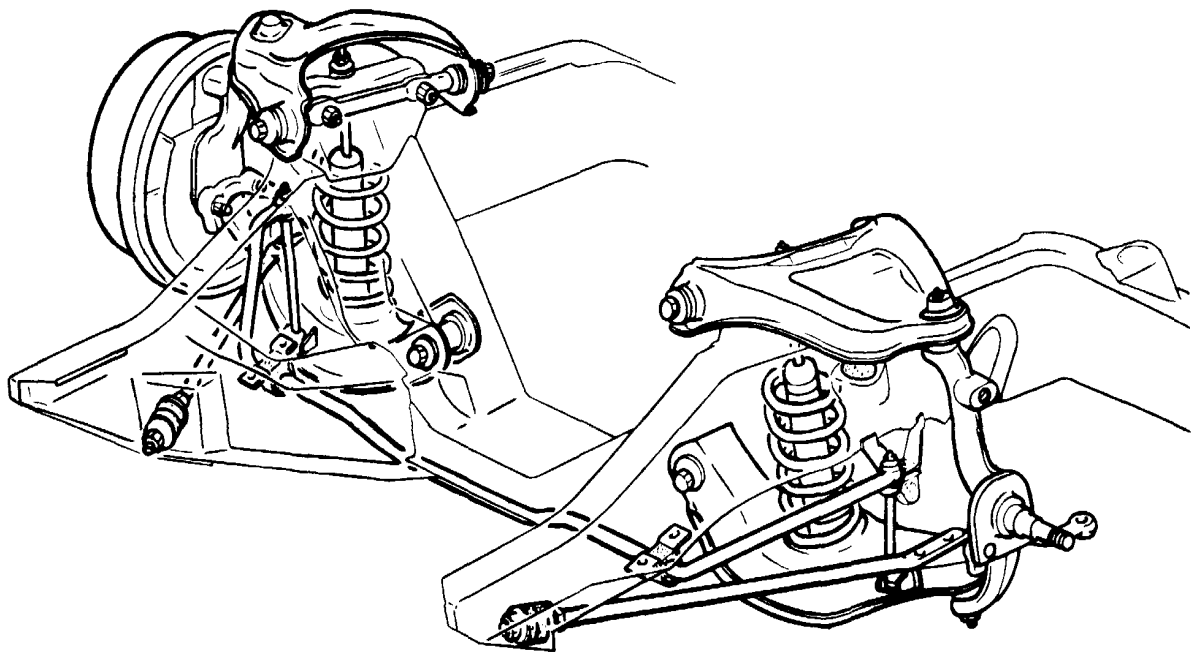
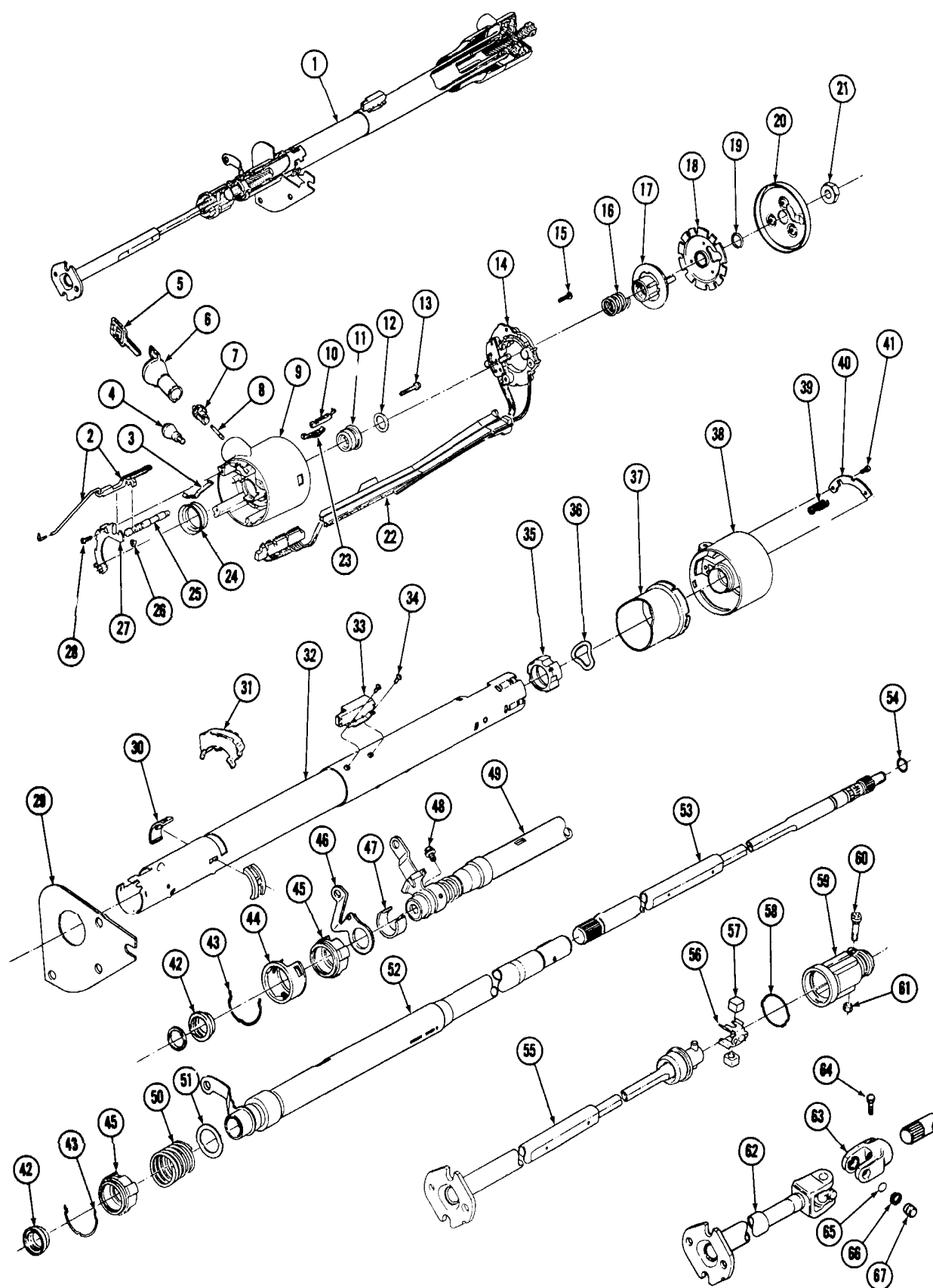


# STEERING



# FRONT SUSPENSION



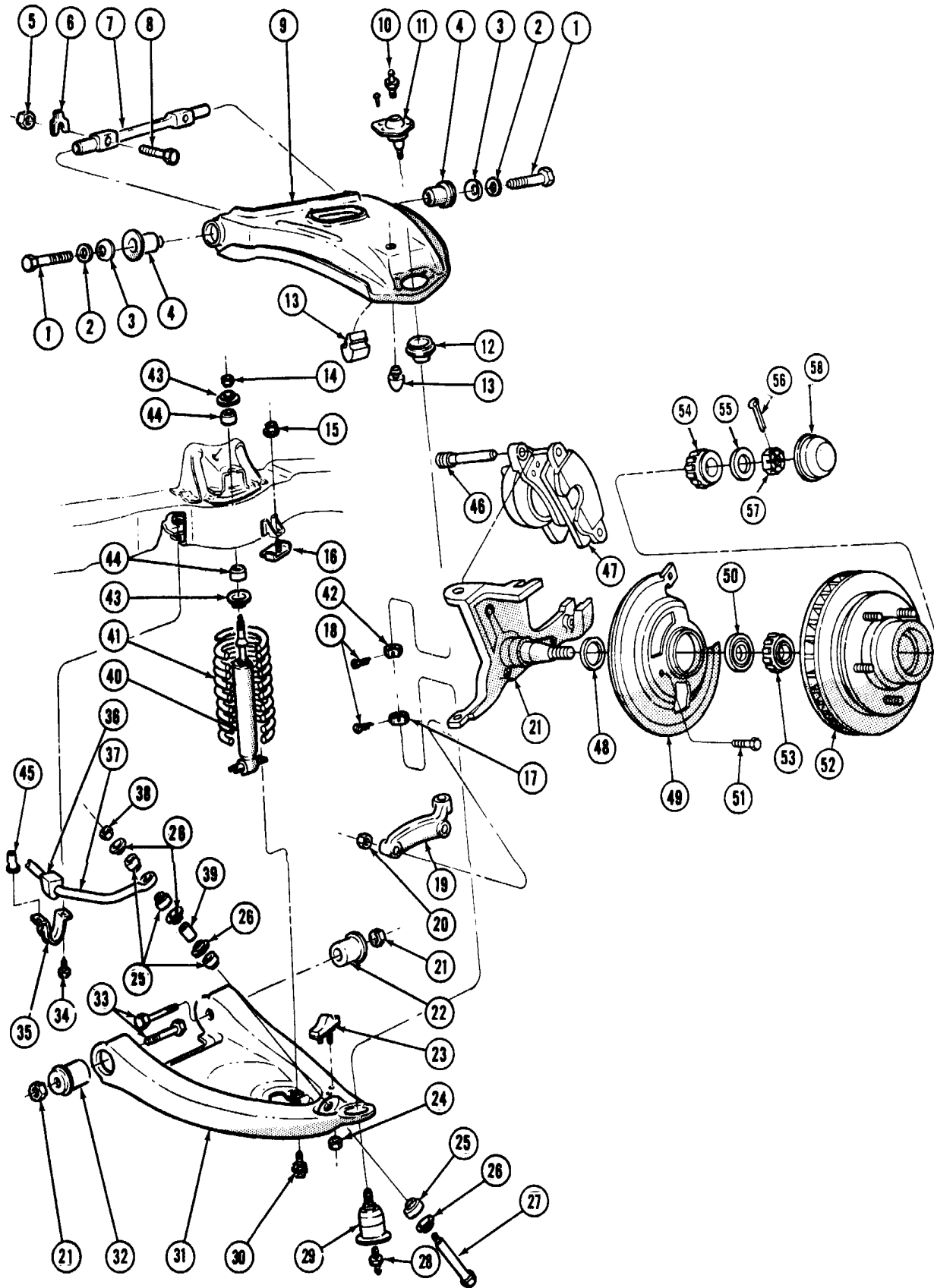
**STEERING COLUMN—MAN. & A.T.**



**VENTURA II**  
**PARTS CATALOGUE**

Key	Part Name	Group No.
1	COLUMN ASM., Steering	6.518
2	RACK ASM., Shaft Lock	2.195
3	SPRING, Housing Rack Preload	2.195
4	KNOB, Hazard Flasher	2.575
5	KEY, Ignition	2.187
6	CYLINDER ASM., Ignition	2.188
7	SECTOR, Ignition Switch Actuator	2.195
8	SHAFT, Ignition Switch Actuator Sector	2.195
9	HOUSING, Steering Column	2.906
10	SWITCH ASM., Ignition Buzzer	2.195
11	BEARING ASM., Steering Shaft Upper	6.521
12	WASHER, Steering Shaft Upper Thrust	6.521
13	SCREW, Upper Brg. Housing Support	N.S.
14	SWITCH ASM., Directional Signal	2.895
15	SCREW, Turn Signal Switch	2.895
16	SPRING, Steering Shaft Upper Bearing	6.521
17	CAM ASM., Turn Signal Cancelling	2.896
18	LOCK, Steering Shaft	6.500
19	RING, Upper Steering Shaft Retaining	6.521
20	COVER ASM., Steering Column Lock Plate (W/Screw)	6.500
21	NUT, Steering Shaft to Wheel	6.515
22	PROTECTOR, Turn Signal Control Wire	2.195
23	CLIP, Ignition Buzzer Switch Retainer	2.906
24	CUP, Turn Signal Housing Thrust	2.195
25	SPRING & BOLT ASM., Steering Column Housing	6.500
26	WASHER, Housing Rack Spring Thrust	6.500
27	GATE, Turn Signal Housing Shift Lever	4.027
28	SCREW, Turn Signal Housing Shift Lever Gate	2.195
29	SEAL, Steering Column to Dash	6.758
30	GROMMET, Neutral & Back-Up Lamp Retainer	2.698
31	SWITCH ASM., Trans. Neutralizer & Back-Up Lamp	2.698
32	JACKET ASM., Steering Column	6.518
33	SWITCH ASM., Ignition	2.188
34	SCREW, Ignition Switch to Steering Column	N.S.
35	BEARING, Steering Column Bowl Lower	6.521
36	WASHER, Steering Column Bowl (Wave)	4.012
37	SHROUD, Steering Column Bowl	4.010
38	BOWL, Gear Shift Lever	4.010
39	SPRING, Upper Gearshift Lever	4.008
40	PLATE, Gearshift Lever Bowl	4.010
41	SCREW, Gearshift Lever Bowl Plate	4.012
42	BEARING, Steering Shaft Adapter - Lower	6.521
43	CLIP, Steering Column Lower Brg. Adapter	6.521
44	RETAINER, Steering Column Lower Brg. Adapter	6.521
45	ADAPTER, Steering Column Lower Brg.	6.521
46	LEVER, Steering Column Lower Shift	4.030
47	SPACER, Steering Column Shift Lever	4.032
48	SCREW & WASHER, to Shift Tube (1/4"-20 x 1/2")	8.977
49	TUBE ASM., Gearshift	4.025
50	SPRING, Steering Column Shift Tube Return	4.027
51	WASHER, Steering Column Shift Tube Return Spring Thrust	4.027
52	TUBE ASM., Gearshift	4.025
53	SHAFT ASM., Steering - Upper	6.524
54	RING, Upper Steering Shaft Retaining	6.521
55	SHAFT ASM., Steering - Intermediate	6.524
56	SPRING, Intermediate Steering Shaft Coupling	6.525
57	BEARING, Intermediate Steering Shaft Coupling	6.525
58	RING, Intermediate Shaft Seal Retainer	6.525
59	CLAMP, PLUG & COUPLING, Intermediate Shaft	6.525
60	BOLT, Coupling to Upper Shaft	N.S.
61	NUT, Coupling to Upper Shaft	N.S.
62	SHAFT ASM., Steering - Intermediate	6.524
63	YOKE, Intermediate Shaft - Upper	6.525
64	BOLT, Intermediate Shaft	N.S.
65	SEAL, Intermediate Steering Shaft "U/J" Oil	6.525
66	RING, Intermediate Steering Shaft "U/J" Retaining	6.525
67	BEARING, Intermediate Steering Shaft "U/J"	6.525

**STEERING COLUMN—MAN. & A.T.**

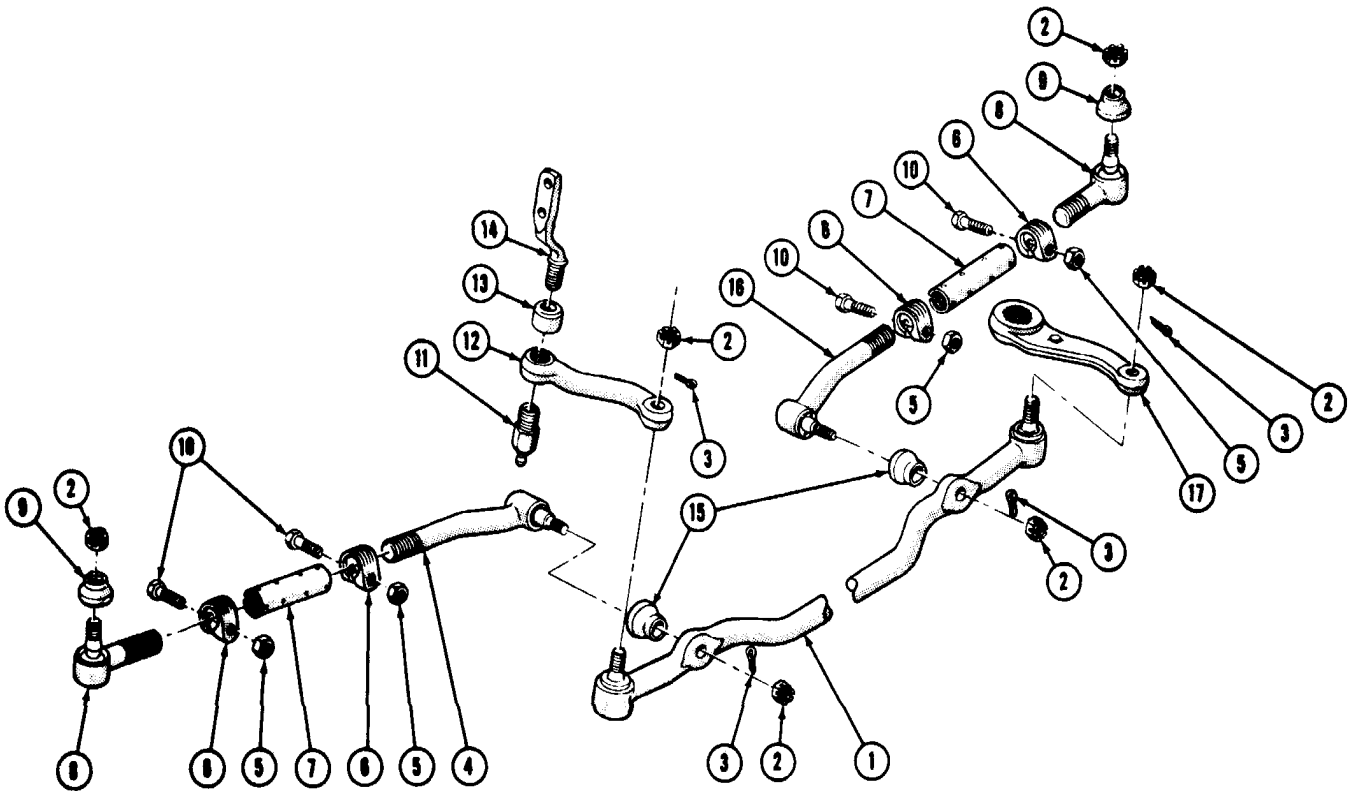


**FRONT SUSPENSION**

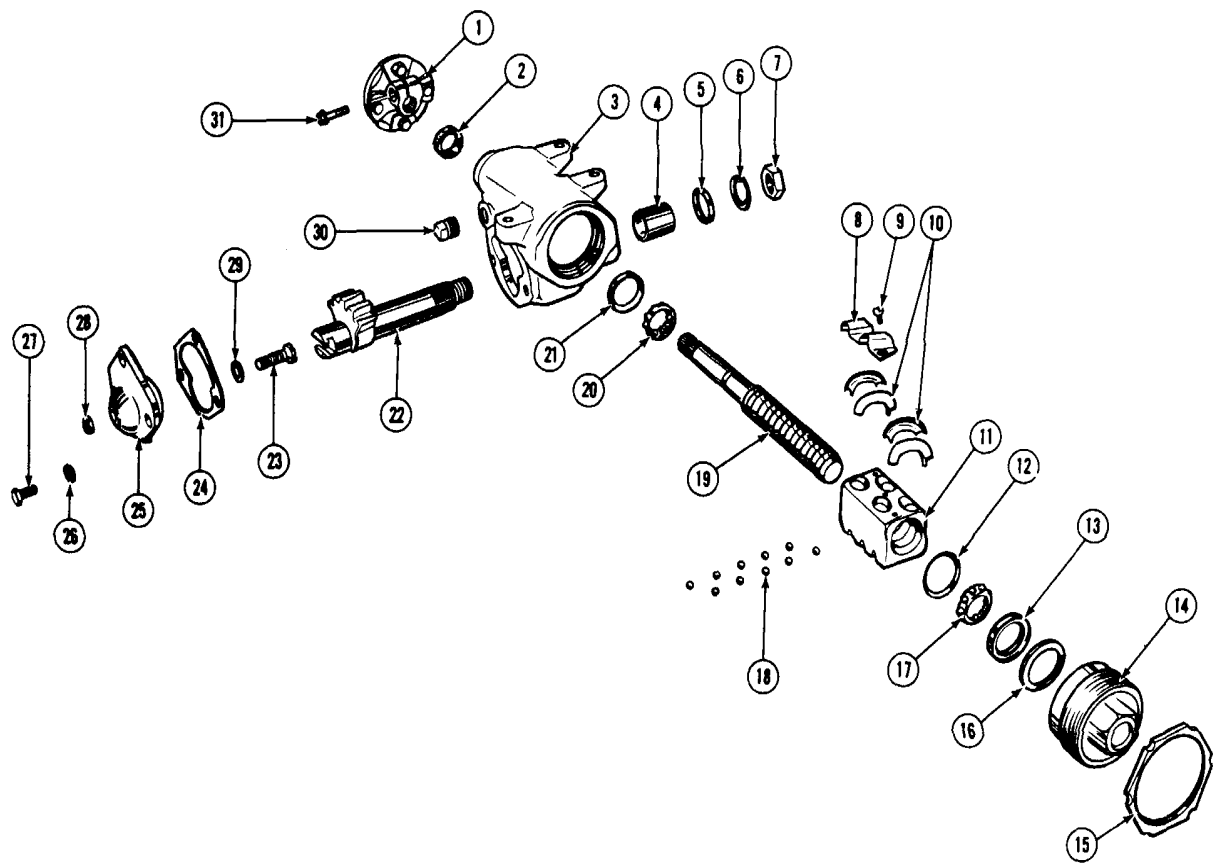


**FRONT SUSPENSION**

Key	Description	Group
1	Bolt, Upper Control Arm to Shaft (Part of #7)	N.S.
2	Lockwasher, Upper Control Arm to Shaft (Part of #7)	N.S.
3	Retainer, Upper Control Arm Bushing (Part of #7)	N.S.
4	Bushing, Upper Control Arm (Part of #7)	N.S.
5	Nut, Upper Control Arm to Frame (3/16-14-301M)	6.178
6	Shim, Upper Control Arm Shaft	6.178
7	Shaft Package, Upper Control Arm (Incl. #1-2-3-4)	6.178
8	Bolt, Upper Control Arm to Frame	6.178
9	Arm Assembly, Front Suspension Upper Control (Incl. #1-2-3-4-7-10-11)	6.178
10	Fitting, Upper Arm Ball Joint (1/4-20 Straight)	8.984
11	Ball Stud Package, Upper Control Arm	6.178
12	Seal, Upper Arm Ball Joint (Part of #11)	N.S.
13	Bumper, Upper Control Arm	6.176
14	Nut, Front Shock Absorber to Upper Arm Bolt	7.347
15	Nut, Reinforcement to Lower Control Arm Bracket	N.S.
16	Reinforcement Assembly, Lower Control Arm Bumper Bracket	6.177
17	Nut, Knuckle to Lower Control Arm (3/16-18-301M)	N.S.
18	Cotter Pin, Knuckle to Control Arm (1/8 x 1)	8.938
19	Arm, Steering Knuckle	6.103
20	Nut, Front Brake to Steering Knuckle (1/2-20-301M)	8.917
21	Nut, Steering Knuckle Lower Control Arm (1/2-13-301M)	8.917
22	Bushing Assembly, Lower Control Arm — Rear	6.170
23	Bumper, Lower Control Arm	6.176
24	Nut, Lower Control Arm Bumper to Control Arm (3/8-16)	8.916
25	Grommet, Front Stabilizer Link	7.244
26	Retainer, Stabilizer Link Bolt Grommet	7.245
27	Link Package, Stabilizer Incl. #43-44-56-57	7.240
28	Fitting, Lower Arm Ball Joint (1/4-28 Straight)	8.984
29	Ball Stud & Seal Assembly, Lower Control Arm (Also Part of #49)	6.174
30	Screw, Shock Absorber Mounting	N.S.
31	Arm, Steering Knuckle Support Lower Control (Incl. #40-47-50)	6.168
32	Bushing Assembly, Lower Control Arm — Front	6.170
33	Bolt, Steering Knuckle Lower Control Arm (1/2-13 x 33/4-301M)	6.172
34	Screw, Stabilizer Shaft Bracket (3/16-18 x 1 1/8)	7.242
35	Bracket, Front Stabilizer Shaft	7.242
36	Bushing, Front Stabilizer Shaft (3/8 dia. hole)	7.243
37	Shaft, Stabilizer	7.241
38	Nut, Stabilizer Link — Front (3/16-24)	7.238
39	Spacer, Stabilizer Link Bolt Grommet	N.S.
40	Shock Absorber Assembly, Front	7.345
41	Spring, Front Coil	7.412
42	Nut, Knuckle to Upper Control Arm (1/2-20-286M)	N.S.
43	Retainer, Shock Absorber Grommet	7.377
44	Grommet, Shock Absorber	7.345
45	Nut, Front Stabilizer Bracket to Frame (3/8-16)	7.242
46	Bolt, Front Brake Housing Retainer	4.665
47	Caliper Assembly, Front Disc Brake	4.665
48	Seal Assembly, Front Wheel Hub — Oil	6.326
49	Shield Assembly, Front Disc Brake Splash	5.002
50	Race and Roller, Front Wheel Inner Bearing	6.309
51	Bolt, Splash Shield to Steering Knuckle (3/16-18 x 3/8)	5.002
52	Hub & Disc Assembly, Front Wheel	5.809
53	Bearing Assembly, Front Wheel — Inner	6.311
54	Bearing Assembly, Front Wheel — Outer	6.313
55	Washer, Steering Knuckle Spindle	6.321
56	Cotter Pin, Steering Knuckle Spindle Nut	S.S.
57	Nut, Steering Knuckle Spindle	6.022
58	Retainer, Front Wheel Bearing Grease	6.330


**STEERING CONTROL LINKAGE**

Key	Part Name	Group No.
1	ROD, Steering Connecting	6.870
2	NUT, Tie Rod End Housing Stud (1/2"-20) (Thick)	8.917
3	COTTER PIN, Steering Linkage (1/8"-1")	8.938
4	ROD & BALL STUD ASSY., Steering Knuckle Tie - R.H.	6.230
5	NUT, Adjuster Clamp Bolt (3/8"-24)	8.916
6	CLAMP, Tie Rod Adjuster	6.234
7	SLEEVE, Tie Rod Adjuster	6.232
8	END ASSY., Tie Rod	6.233
9	SEAL, Tie Rod Ball Stud Dust	6.111
10	BOLT, Adjuster Clamp (3/8"-24 x 1 5/8")	N.S.
11	BUSHING, Steering Arm Idler Support	6.897
12	ARM, Steering Connecting Rod Idler	6.895
13	SEAL, Idler Lever Bushing	6.898
14	SUPPORT ASSY., Idler Lever	6.896
15	SEAL, Tie Rod Ball Stud Dust	6.111
16	ROD & BALL STUD ASSY., Steering Knuckle Tie - L.H.	6.230
17	ARM, Steering Gear Pitman	6.859



**STANDARD STEERING GEAR**

Key	Part Name	Group No.	Key	Part Name	Group No.
1	COUPLING & LOWER FLANGE, Strg. Gear . . . . .	6.525	17	BEARING, Strg. Gear Thrust . . . . .	6.835
2	SEAL, Strg. Shaft Oil . . . . .	6.840	18	BALL, Steering Gear Worm . . . . .	6.844
3	HOUSING ASM., Strg. Gear . . . . .	6.803	19	SHAFT, Steering Gear (w/Balls & Nut) . . . . .	6.524
4	BUSHING, Pitman Shaft . . . . .	6.786	20	BEARING, Strg. Gear Thrust . . . . .	6.835
5	SEAL, Pitman Shaft . . . . .	6.855	21	RACE, Strg. Gear Worm Thrust Bearing . . . . .	6.835
6	LOCKWASHER, Pitman Arm to Pitman Shaft(7/8").	8.931	22	SHAFT ASM., Pitman . . . . .	6.850
7	NUT, Strg. Gear Pitman Arm (7/8"-14) . . . . .	6.861	23	SCREW, Lash Adjuster . . . . .	6.822
8	CLAMP, Worm Ball Return Guide . . . . .	▲ 6.842	24	GASKET, Housing Side Cover . . . . .	6.809
9	BOLT & WASHER ASM., Return Guide Clamp . . . . .	▲ 6.843	25	COVER, Housing Side . . . . .	6.807
10	GUIDE, Worm Ball Return . . . . .	▲ N.S.	26	LOCKWASHER, Cover to Housing (3/8") . . . . .	8.931
11	NUT, Steering Gear Worm Ball . . . . .	6.841	27	BOLT, Cover to Housing (3/8"-16 x 3/4") . . . . .	8.900
12	RETAINER, Worm Thrust Adj. Lower Bearing . . . . .	6.835	28	NUT, Sector Adjusting Screw (7/16"-20 Check) . . . . .	8.916
13	RACE, Strg. Gear Worm Thrust Bearing . . . . .	6.835	29	SHIM PKG., Lash Adjuster . . . . .	6.828
14	ADJUSTER, Worm Thrust Bearing . . . . .	6.830	30	PLUG, Oil Filler (1/2") (1961-62) . . . . .	6.824
15	NUT, Worm Bearing Adjusting . . . . .	6.832	31	BOLT, Shaft Flange to Shaft Clamping . . . . .	6.525
16	SPRING, Worm Thrust Bearing Preload . . . . .	6.835			

(▲) GUIDE & CLAMP KIT-6.842





<b>GM</b>	<b>VENTURA II</b>
	<b>PARTS CATALOGUE</b>

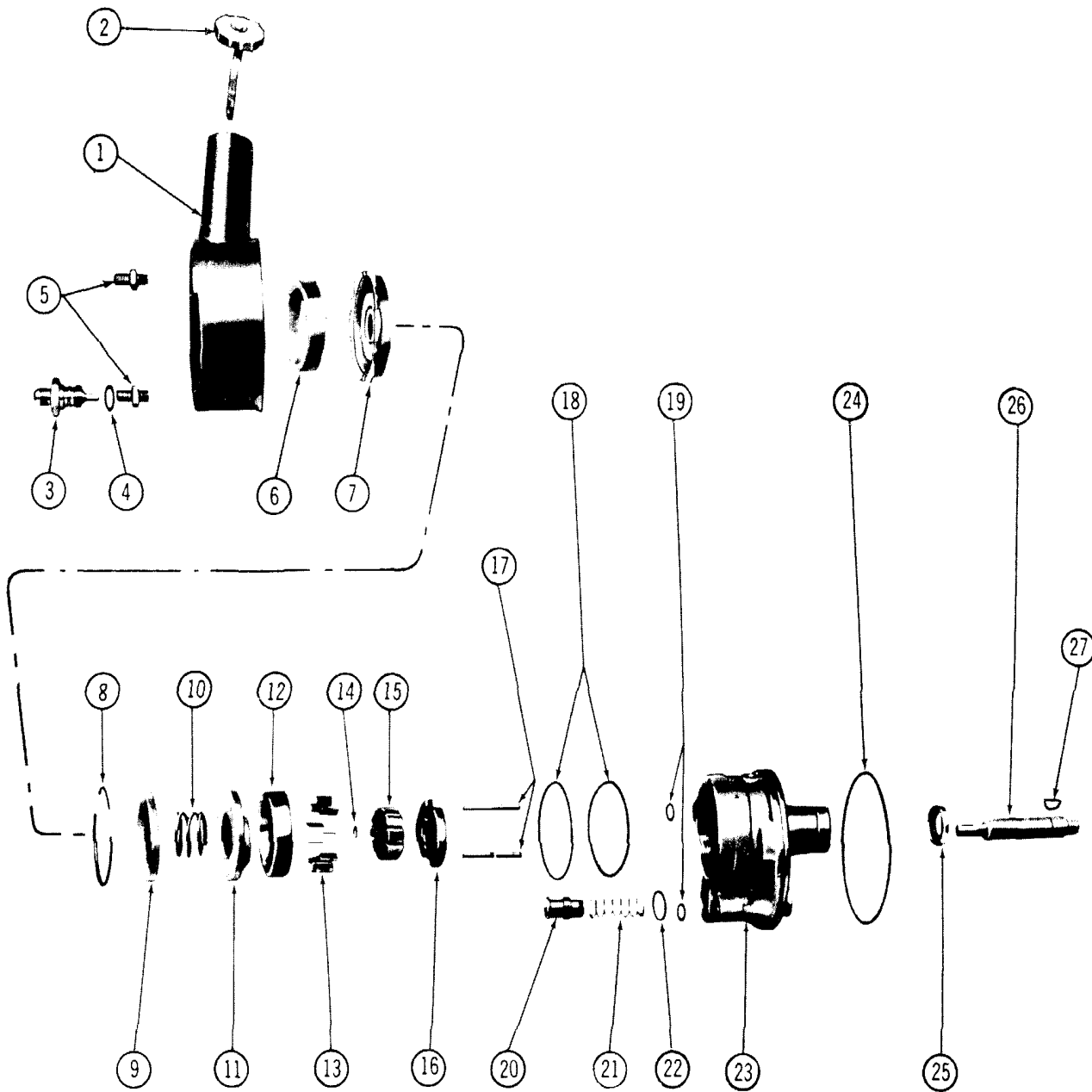
Key	Part Name	Group No.	Key	Part Name	Group No.
1	— RIVET, Steering Shaft Coupling (Large) . . . . .	(A) N.S.	43	— NUT, Pitman Shaft Gear Lash Adjuster . . . . .	6.822
2	— REINFORCEMENT, Steering Gear Coupling . . . . .	(A) 6.525	44	— SCREW & LOCKWASHER ASSY., Clamp to Rack (1/4"-28 x 5/16") . . . . .	(F) 8.907
3	— COUPLING, Steering Shaft Flange . . . . .	(A) N.S.	45	— CLAMP, Strg. Gear Ball Return Guide . . . . .	(F) 6.843
4	— CABLE ASSY., Horn Ground Strip . . . . .	(A) N.S.	46	— GUIDE, Strg. Gear Ball Return . . . . .	(F) 6.842
5	— FLANGE, Steering Gear Shaft Lower . . . . .	(A) N.S.	47	— BALL PKG., Recirculating (Bright Finish) (Selective) . . . . .	(F) 6.844
6	— BOLT, Steering Gear Flange to Shaft Coupling . . . . .	(A) 6.525	48	— BALL PKG., Recirculating (Black Finish) (Selective) . . . . .	(F) 6.844
7	— NUT, Strg. Gear Worm Bearing Adjusting . . . . .	6.832	49	— RACK, Piston . . . . .	(F) N.S.
8	— RING, End Plug Oil Seal Retaining . . . . .	(B) 6.840	50	— RING, Strg. Gear Power Cylinder Piston . . . . .	(F) 6.579
9	— SEAL, End Plug Stub Shaft Oil . . . . .	(C) (B) N.S.	51	— SEAL, Piston Ring Back-Up "O" Ring . . . . .	(F) 6.579
10	— BEARING, Steering Gear Housing End Cover . . . . .	(B) 6.826	52	— COVER, Steering Gear Lower End . . . . .	6.824
11	— PLUG, Housing Upper End Adjuster . . . . .	(B) N.S.	53	— RING, Lower End Plug Retainer . . . . .	6.824
12	— SPACER, Thrust Bearing . . . . .	(H) N.S.	54	— SEAL, Steering Gear End Cover "O" Ring . . . . .	6.825
13	— SPRING, Spool Valve . . . . .	(D) 6.552	55	— PLUG, Rack Piston End . . . . .	6.586
14	— SPOOL, Valve . . . . .	(D) N.S.	56	— BEARING ASSY., Pitman Shaft Needle . . . . .	(H) 6.786
15	— SLEEVE, Torsion Bar . . . . .	(D) N.S.	57	— SEAL, Strg. Gear Pitman Shaft Oil . . . . .	(L) 6.855
16	— PIN, Torsion Bar . . . . .	(D) N.S.	58	— WASHER, Pitman Shaft Seal Back-Up . . . . .	(L) 6.855
17	— SHAFT, Stub . . . . .	(D) N.S.	59	— SEAL, Strg. Gear Pitman Shaft Oil—Double Lip . . . . .	(L) 6.855
18	— BEARING, Torsion Bar . . . . .	(D) N.S.	60	— WASHER, Pitman Shaft Seal Back-Up . . . . .	(L) 6.855
19	— BODY, Valve . . . . .	(D) N.S.	61	— RING, Pitman Shaft Seal Retaining . . . . .	6.856
20	— SLEEVE, Valve Body . . . . .	(D) N.S.	62	— LOCKWASHER, Pitman Arm (7/8") . . . . .	N.S.
21	— BAR, Torsion . . . . .	(D) N.S.	63	— NUT, Steering Gear Pitman Arm (7/8"-14) . . . . .	6.861
22	— PIN, Cap to Torsion Bar . . . . .	(D) N.S.	64	— HOUSING, Steering Gear . . . . .	6.803
23	— CAP, Valve Body . . . . .	(D) N.S.	65	— BALL, Oil Passage Plug (5/16" dia.) . . . . .	(H) 8.899
24	— SEAL, Valve Assy. Oil Ring Back-Up "O" Ring . . . . .	(E) (D) N.S.	66	— RACE, Lower Thrust Bearing . . . . .	(G) N.S.
25	— SEAL, Valve Assy. Oil Ring Back-Up "O" Ring . . . . .	(E) (D) N.S.	67	— BEARING, Lower Thrust . . . . .	(G) N.S.
26	— SEAL, Valve Assy. Oil Ring Back-Up "O" Ring . . . . .	(E) (D) N.S.	68	— RING, Valve Assy. to Housing . . . . .	(E) (D) N.S.
27	— PIN, Valve Body Drive . . . . .	(F) N.S.	69	— RING, Valve Assy. to Housing . . . . .	(E) (D) N.S.
28	— WORM, Steering . . . . .	(F) N.S.	70	— RING, Valve Assy. to Housing . . . . .	(E) (D) N.S.
29	— RACE, Lower Thrust Bearing . . . . .	(G) N.S.	71	— SEAL, Torsion Bar Cap to Worm "O" Ring . . . . .	(D) N.S.
30	— CONNECTOR, Hose Fitting to Hsg. (1/4" I.D. x 17/32" O.D.) . . . . .	(H) 6.673	72	— PIN, Valve Body to Cap . . . . .	(D) N.S.
31	— CONNECTOR, Hose Fitting to Hsg. (9/32" I.D. x 39/64" O.D.) . . . . .	(H) 6.673	73	— SLEEVE, Valve Body . . . . .	(D) N.S.
32	— GEAR, Pitman Shaft . . . . .	(J) N.S.	74	— PIN, Spool Drive . . . . .	(D) N.S.
33	— SPRING, Lash Adjuster . . . . .	(J) N.S.	75	— SEAL, Torsion Bar to Stub Shaft "O" Ring . . . . .	(D) N.S.
34	— WASHER, Lash Adjuster Spring . . . . .	(J) N.S.	76	— "O" RING, Strg. Gear Valve Spool Dampener . . . . .	(D) 6.552
35	— ADJUSTER, Lash . . . . .	(J) N.S.	77	— SEAL, Adjusting Plug to Housing "O" Ring . . . . .	(C) (B) N.S.
36	— WASHER, Lash Adjuster Thrust . . . . .	(J) N.S.	78	— RETAINER, Upper Thrust Bearing . . . . .	(H) N.S.
37	— RETAINER, Lash Adjuster . . . . .	(J) N.S.	79	— RACE, Upper Thrust Bearing—Lower . . . . .	(H) N.S.
38	— SEAL, Side Cover to Housing "O" Ring . . . . .	6.809	80	— BEARING, Valve Assy., Upper Thrust . . . . .	(H) N.S.
39	— BUSHING, Housing Side Cover . . . . .	(K) N.S.	81	— RACE, Upper Thrust Bearing—Upper . . . . .	(H) N.S.
40	— COVER, Housing Side . . . . .	(K) N.S.	82	— BEARING, Stud Shaft Needle . . . . .	(B) N.S.
41	— LOCKWASHER, Cover to Housing (3/8" med.) . . . . .	8.931	83	— BOLT, Strg. Shaft Coupling to Upper Flange . . . . .	(A) N.S.
42	— BOLT, Cover to Housing (3/8"-16 x 1") . . . . .	8.900	84	— REINFORCEMENT, Steering Gear Coupling . . . . .	(A) 6.525
			85	— WASHER, Strg. Gear Shaft Flange Bolt . . . . .	(A) 6.525
			86	— RIVET, Steering Shaft Coupling (Small) . . . . .	(A) N.S.
			87	— RING, Rack Piston Stop Snap . . . . .	6.806

THE PARTS INDICATED WITH LETTERS ARE SERVICED IN THE FOLLOWING PACKAGES OR UNITS:

(SOME PARTS MAY BE SERVICED IN TWO DIFFERENT PACKAGES)

A	FLANGE ASSY., Steering Gear Lower . . . . .	6.525
B	PLUG ASSY., Strg. Gear Upper End Adjuster . . . . .	6.830
C	SEAL KIT, Steering Gear Adjuster Plug . . . . .	6.840
D	VALVE ASSY., Steering Gear (Hyd.) w/Pin . . . . .	6.550
E	RING KIT, Steering Gear Valve . . . . .	6.552
F	RACK, Piston & Worm Assy., Steering Gear . . . . .	6.586
G	BEARING KIT: Lower . . . . .	6.835
H	BEARING KIT, Upper . . . . .	6.835
J	SHAFT ASSY., Steering Gear Pitman . . . . .	6.850
K	COVER ASSY., Steering Gear Housing Side . . . . .	6.807
L	SEAL & WASHER KIT . . . . .	6.855

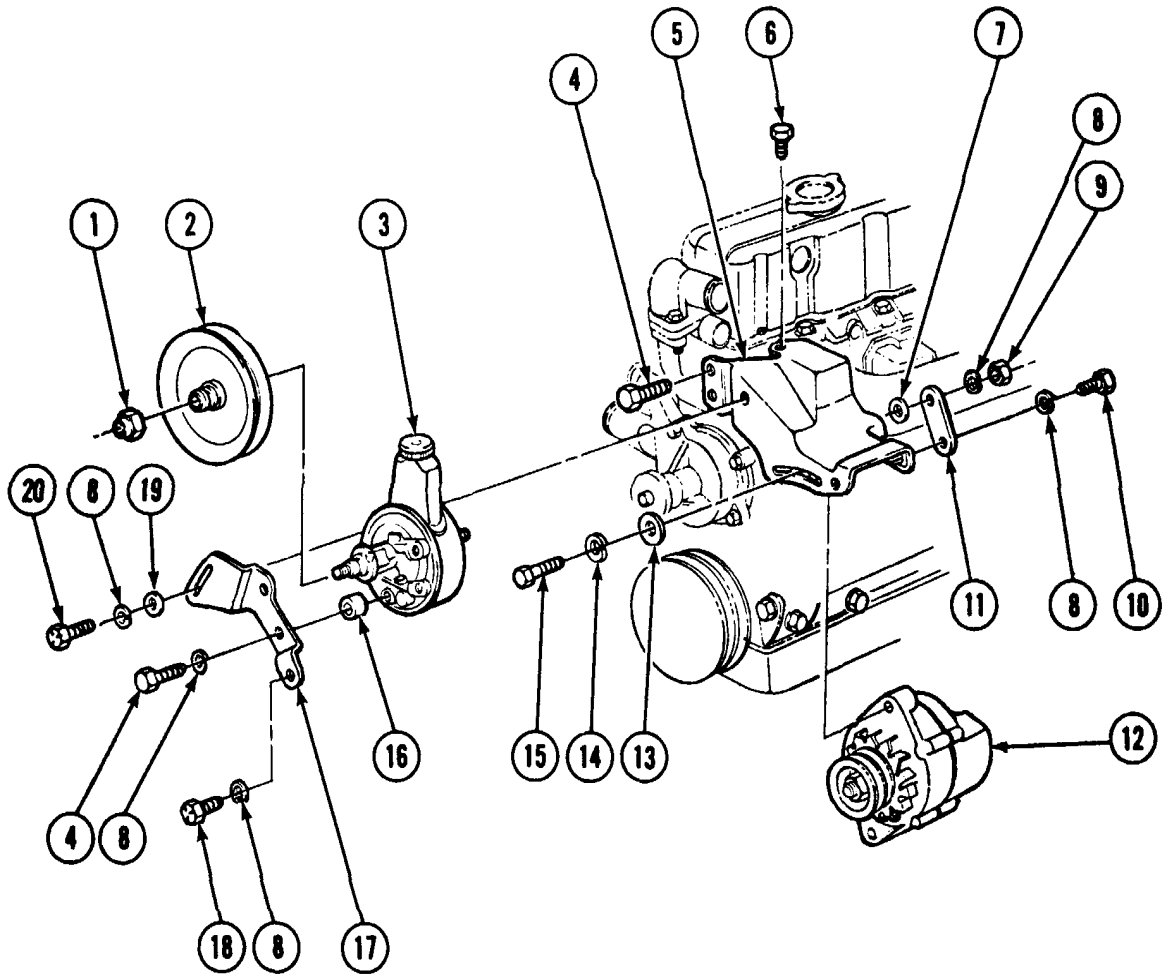
**POWER STEERING GEAR ASSEMBLY**



**POWER STEERING PUMP**

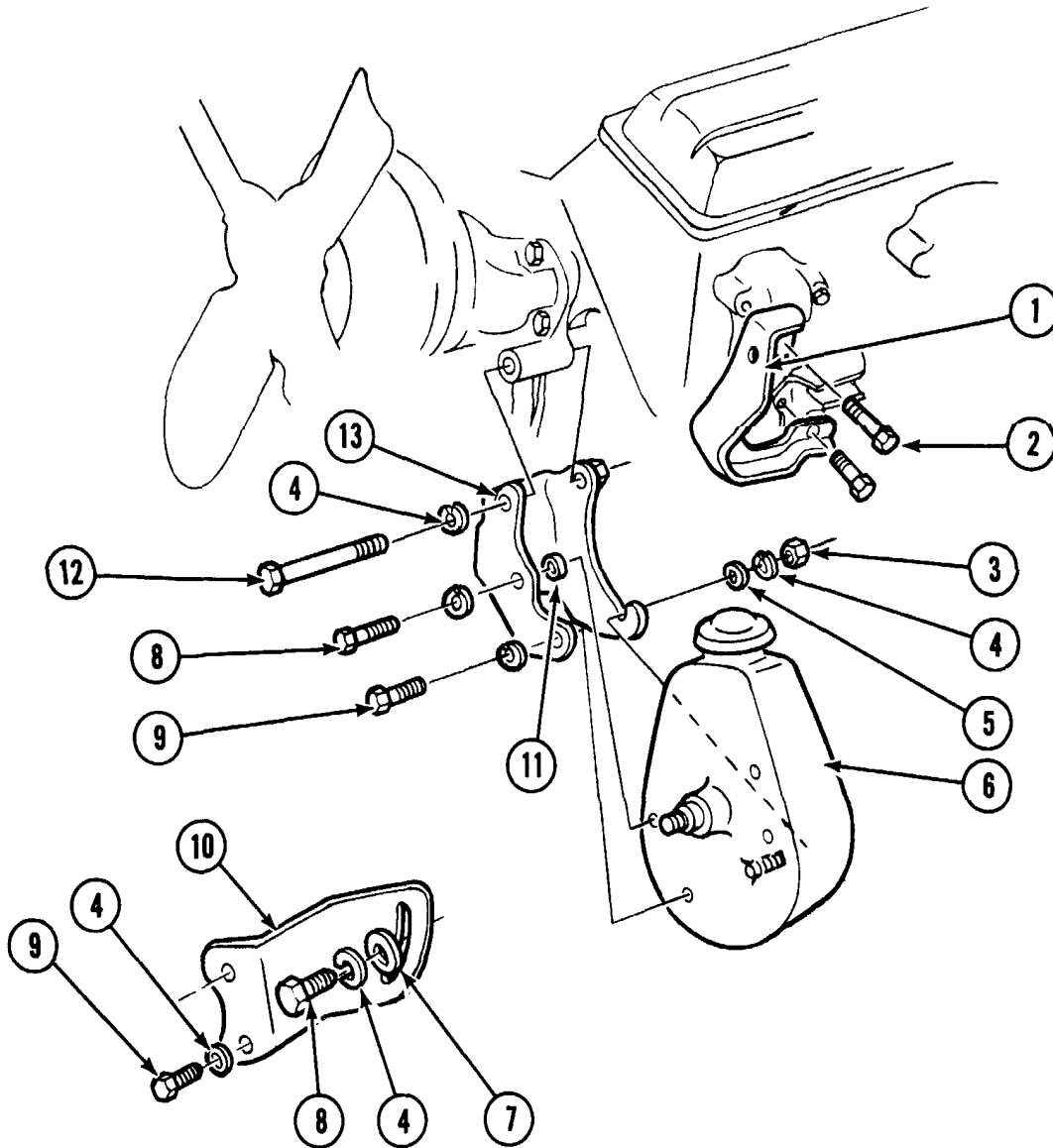
Key	Description	Group
1	Reservoir, Hydraulic Steering Pump .....	6.635
2	Cap, Hydraulic Steering Pump Oil Filler .....	6.635
3	Filter and Fitting, Steering Pump Outlet .....	6.673
4	Seal, Pump Outlet Fitting .....	6.674
5	Stud, Steering Pump Mounting .....	6.606
6	Element, Steering Pump Inlet Filter .....	6.630
7	Filter, Steering Pump Inlet .....	6.630
8	Ring, Steering Pump End Plate Retaining .....	6.609
9	Plate, Steering Pump End .....	6.612
10	Spring, Steering Pump Pressure Plate .....	6.612
11	Plate, Steering Pump Pressure .....	6.612
12	N.S.S. Ring, (Part of Ring, Rotor and Vane Kit) ....	6.610
13	Vane Kit, Steering Pump .....	6.610
14	Ring, Steering Pump Shaft Retaining .....	6.616

Key	Description	Group
15	N.S.S. Rotor (Part of Ring, Rotor and Vane Kit) .....	6.610
16	Plate, Steering Pump Thrust .....	6.612
17	Pin, Steering Pump Dowel .....	6.608
18	Seal, Steering Pump End and Pressure Plate .....	6.612
19	Seal, Steering Pump Reservoir Bolt .....	6.635
20	Valve, Steering Pump Control .....	6.624
21	Spring, Steering Pump Flow Control .....	6.612
22	Seal, Steering Valve Reaction Spool .....	6.674
23	Housing, Steering Pump (Includes Ball, Plug and Seal)	6.608
24	Seal, Steering Pump Reservoir .....	6.635
25	Seal, Steering Pump Drive Shaft Oil .....	6.617
26	Shaft, Steering Pump Drive .....	6.614
27	Key, Steering Pump Drive Shaft .....	8.960



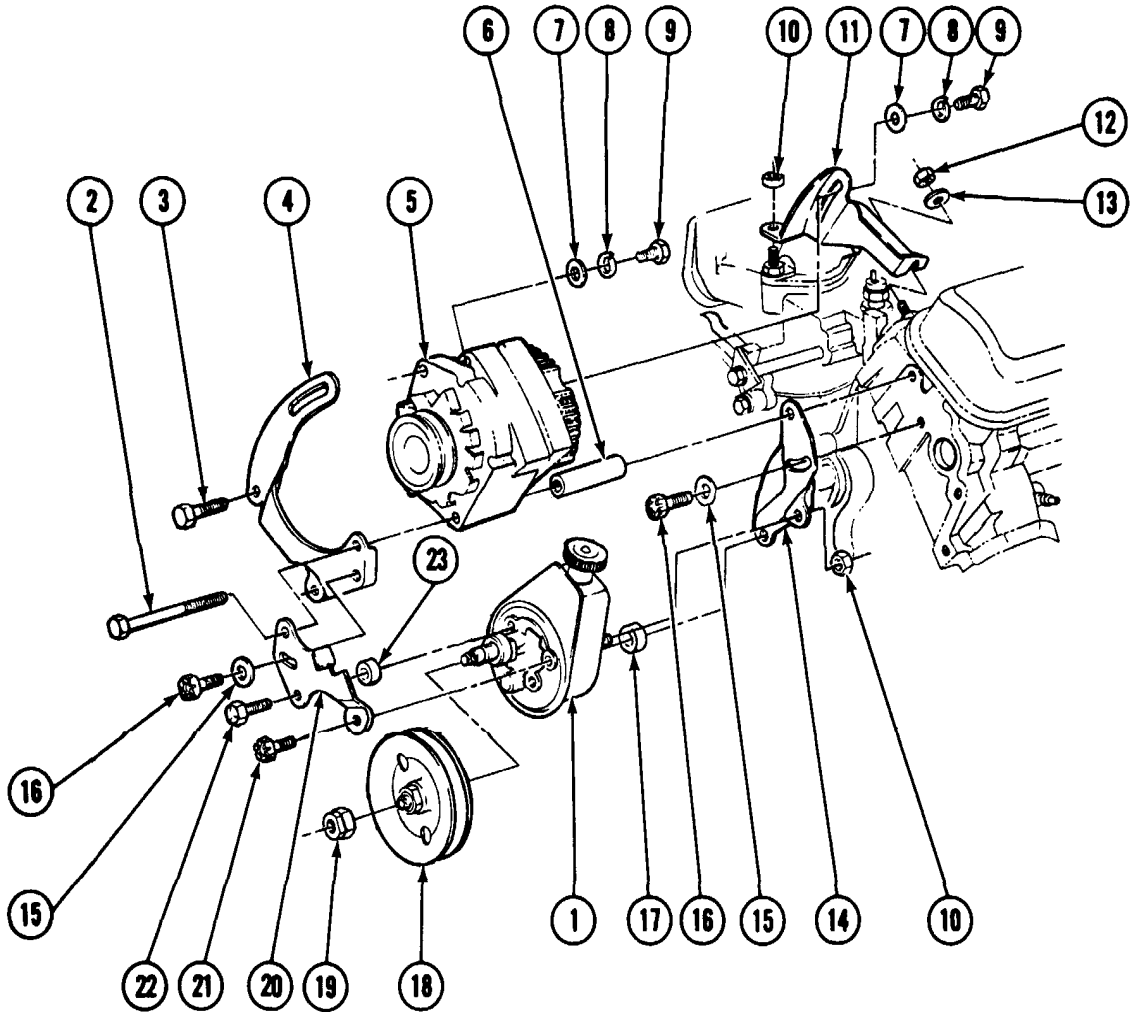
**1971-74 POWER STEERING PUMP MOUNTING—6 CYL. ENG.**

Key	Part Name	Group No.
1	NUT, Power Steering Pump Pulley Attaching	6.655
2	PULLEY, Power Steering Pump	6.655
3	PUMP ASM., Power Steering	6.605
4	BOLT, Bracket to Cyl. Head (3/8"-16 x 1")	8.900
5	BRACKET, Power Steering Pump Mtg.	6.606
6	BOLT, Bracket to Cyl. Head (3/8"-16 x 5/8")	8.900
7	WASHER, Rear Support to Bracket (3/8" x 1")	8.929
8	WASHER, Rear Support to Bracket Lock (3/8")	8.931
9	NUT, Bracket to Pump (3/8"-16)	8.915
10	BOLT, Rear Support to Bracket (3/8"-16 x 1")	8.900
11	SUPPORT, Pump to Bracket-Rear	6.606
12	DELCOTRON	2.275
13	WASHER, Delcotron to Bracket (5/16")	8.929
14	LOCKWASHER, Delcotron to Bracket (5/16")	8.931
15	BOLT, Delcotron to Bracket Mtg. (5/16"-18 x 1")	8.900
16	SPACER, Front Support to Pump	6.606
17	SUPPORT, Pump to Bracket-Front	6.606
18	BOLT, Front Support to Mtg. Bracket (3/8"-16 x 3/4")	8.900
19	WASHER, Frt. Support to Mtg. Bracket Plain (3/8")	8.929
20	BOLT, Front Support to Mtg. Bracket (3/8"-16 x 7/8")	8.900



**1971-73 307 ENG. POWER STEERING PUMP MOUNTING**

Key	Part Name	Group No.
1	SUPPORT, Steering Pump	6.606
2	BOLT (3/8"-16 x 1")	8.900
3	NUT (3/8"-16)	8.915
4	LOCKWASHER (5/8")	8.931
5	WASHER (3/8" I.D. x 7/8" O.D.)	8.929
6	PUMP ASM., Steering Gear Oil	6.605
7	WASHER (3/8" I.D. x 7/8" O.D.)	8.929
8	BOLT (3/8"-16 x 1")	8.900
9	BOLT (3/8"-16 x 3/4")	8.900
10	BRACKET, Steering Pump Adjusting	6.606
11	WASHER (3/8" I.D. x 7/8" O.D.)	8.929
12	BOLT (3/8"-16 x 3")	8.900
13	BRACKET, Steering Pump Pivot	6.606



**1971-74 POWER STEERING PUMP & DRIVE W/8 CYL. ENGINE**

Key	Part Name	Group No.
1	PUMP ASM., Steering Gear Oil . . . . .	6.605
2	BOLT, Alt. & Pump Plates to Head (3/8"-16 x 6 1/16") . . . . .	2.277
3	BOLT, Alt. to Water Pump & Timing Chain Cover (5/16"-18 x 1 1/2") . . . . .	8.900
4	PLATE ASM., Alt. Mtg. . . . .	2.277
5	ALTERNATOR ASM. . . . .	2.275
6	SPACER, Alt. & P.S. Pump Plates to Head . . . . .	2.277
7	WASHER, Alt. to Mtg. Plate (5/16" Flat) . . . . .	8.929
8	LOCKWASHER, Alt. to Mtg. Plate & Brace (5/16 Med.) . . . . .	8.931
9	BOLT, Alt. to Mtg. Plate & Brace (5/16"-18 x 1") . . . . .	8.900
10	NUT, Alt. Rear Brace to Water Outlet Fitting Bolt (3/8"-16) . . . . .	8.915
11	BRACE, Alt. Rear . . . . .	2.317
12	NUT, Alt. Rear Brace to Intake Manifold (5/16"-18) . . . . .	8.915
13	WASHER, Alt. Adj. Strap . . . . .	2.277
14	PLATE, Steering Pump - Rear . . . . .	6.606
15	WASHER, Steering Pump Support to Brkt or Head . . . . .	6.606
16	BOLT, Steering Pump Frt. Plate Adj. (Locking Hd.) . . . . .	8.900
17	SPACER, Steering Pump to Brkt. - Lower . . . . .	6.655
18	PULLEY, Steering Pump . . . . .	6.655
19	NUT, Steering Pump Shaft to Pulley (9/16"-18 Spec. Lock) . . . . .	8.917
20	PLATE, Steering Pump Mtg. - Front . . . . .	6.606
21	BOLT, Steering Front Pump Plate to Pump (3/8"-16 x 3/4" Lock) . . . . .	8.900
22	BOLT, Steering Front Pump Plate to Pump (Use w/Spacer) (3/8"-16 x 1 1/4") . . . . .	8.900
23	SPACER, Steering Frt. Pump Plate to Pump Body . . . . .	N.S.