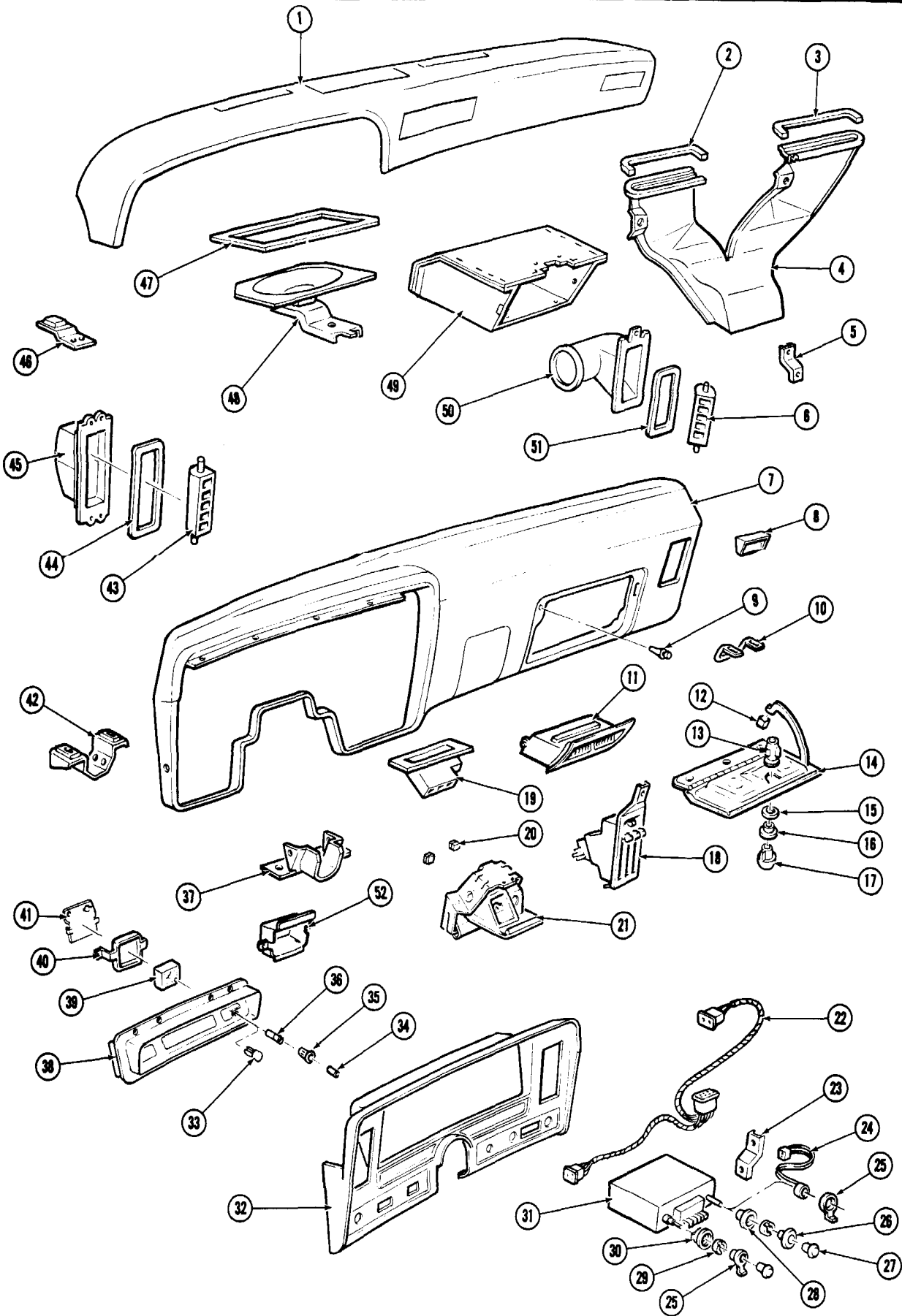


CONSOLE PARTS

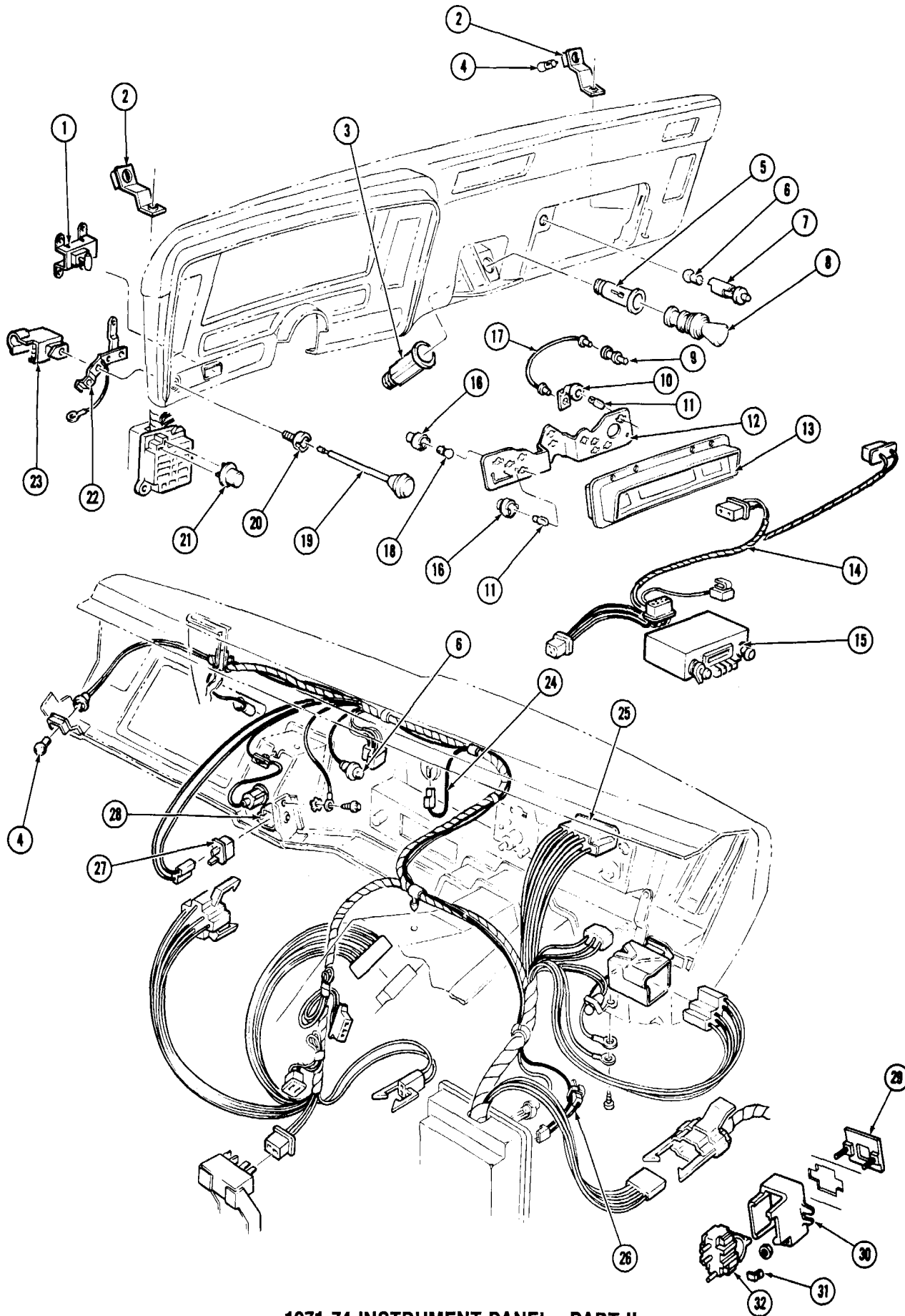
Key	Part Name	Group No.
1	CONSOLE, Transmission Floor	10,252
2	INSERT, Console Trim	10,242
3	PLATE, Trans. Control Lever Hole Trim	4,017
4	EXTENSION, Trans. Cont. Lever Hole Trim Plate	4,017
5	SCREW (#8-32 x 5/16")	8,977
6	SCREW (#8-32 x 5/8")	8,977
7	RETAINER, Trans. Control Lever Seal	4,015
8	SEAL, Trans. Control Lever	4,015
9	SCREW (#8-18 x 5/8")	8,977
10	SEAL, Trans. Control Lever	4,015
11	PLATE, Trans. Control Hole Trim - RH	4,017
12	PLATE, Trans. Control Hole Trim - LH	4,017
13	RETAINER, Trans. Control Lever Seal	4,015
14	DIAL, Trans. Control Indicator	4,020
15	DIAL PLATE, Trans. Control Indicator	4,020
16	RETAINER, Trans. Control Indicator Dial	4,020
17	"U" NUT (#8-18)	8,921
18	SCREW (#10-16 x 1/2")	8,977
19	BULB, Console Compartment (#1445)	8,991
20	SCREW (#10-16 x 5/8")	8,977
21	WASHER (1/4" I.D.)	8,929
22	RETAINER, Console Trim Insert	10,242
23	NUT (#8-32)	8,915
24	BRACKET, Console Front Center	10,240
25	"U" NUT (#8-18)	8,921
26	HARNES, Console Compartment Wire	13,090
27	SCREW (#8-18 x 1 1/4")	8,977



1971-74 INSTRUMENT PANEL - PART I

Key	Part Name	Group No.
1	PAD ASM., Instrument Panel	14.655
2	SEAL, Defroster Outlet to Inst. Panel	9.779
3	SEAL, Defroster Outlet to Inst. Panel	9.779
4	OUTLET, Defroster Air	9.779
5	BRACKET, Defroster Outlet	9.779
6	VALVE, Air Side Outlet	9.262
7	PANEL, Instrument	10.230
8	EMBLEM, Inst. Panel Cover-"Pontiac"	10.254
9	BUMPER, Inst. Compt. Door	10.263
10	STRIKER, Inst. Compt. Lock	10.268
11	OUTLET, Center Air	9.262
12	BUMPER, Inst. Compt. Door Stop	10.263
13	CASE ASM., Inst. Compt. Lock	10.266
14	DOOR, Inst. Panel Compt.	10.261
15	WASHER, Inst. Compt. Lock	10.266
16	ESCUTCHEON, Inst. Compt. Lock	10.267
17	CYLINDER, Inst. Compt. Lock	10.266
18	CONTROL ASM., Heater & Air Cond.	8.849
19	OUTLET, Heater Air Distributor	9.786
20	BUMPER, Ash Tray	12.009
21	TRAY ASM., Inst. Panel Ash	12.009
22	HARNESS, Radio Wire	9.656
23	KNOB, Rear Speaker Fader Control	9.649
24	CONTROL ASM., Rear Speaker Fader	9.649
25	KNOB, Tone Control	9.649
26	SPACER, Control Knob	9.649
27	KNOB, Tuning and Volume Control	9.649
28	SPACER, Station Selector Knob	9.649
29	NUT, Receiver to Trim Plate	9.667
30	SPACER, Volume Control Knob	9.649
31	RECEIVER ASM., Radio (Serviced in Accessory Pkg. Only)	N.S.
32	CARRIER, Inst. Cluster	9.743
33	PLUG, Clock Stem Opening	N.S.
34	NUT, Clock Reset Knob	9.772
35	KNOB, Clock Reset	9.772
36	SLEEVE, Clock Reset Stem	N.S.
37	COVER, Steering Column	6.518
38	CLUSTER ASM., Instrument (Serviced in Components)	N.S.
39	CLOCK ASM., Inst. Panel (Serviced in Accessory Pkg.)	N.S.
40	PLATE, Clock Opening Cover	9.772
41	CIRCUIT, Clock Printed	N.S.
42	BRACKET ASM., Steering Column Support	6.760
43	VALVE, Side Outlet Air - L.H.	9.262
44	SEAL, Side Outlet Adapter	9.260
45	ADAPTER, Side Outlet - L.H.	9.262
46	PLATE, Vehicle Identification Number	N.S.
47	COVER, Speaker Opening (less radio)	9.650
48	SPEAKER ASM., Radio	9.665
49	COMPARTMENT, Inst. Panel	10.260
50	OUTLET, Side Air - R.H.	9.262
51	SEAL, Side Outlet Adapter	9.260
52	HOUSING, Seat Belt Warning Light	14.895

1971-74 INSTRUMENT PANEL — PART 1

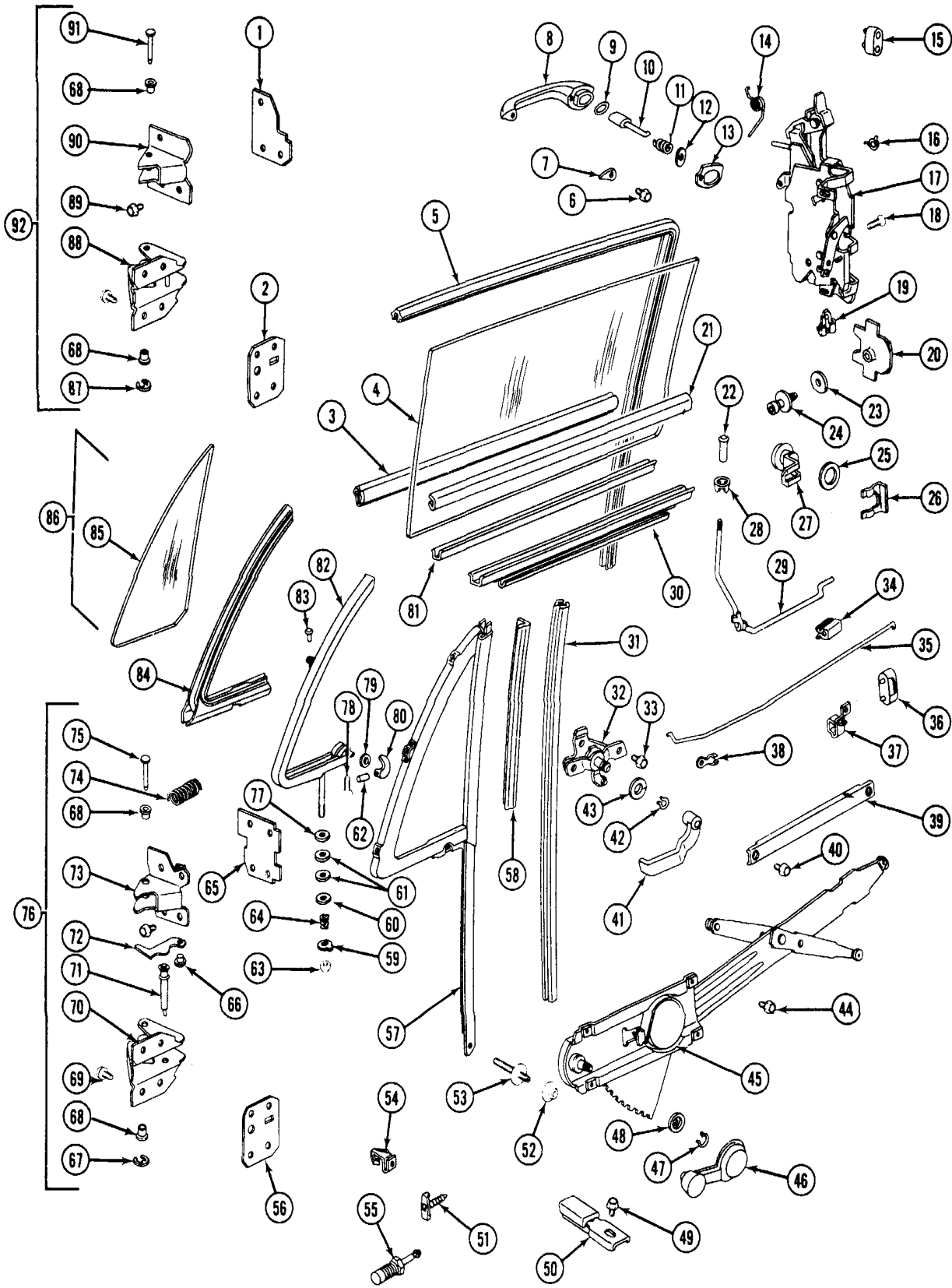


1971-74 INSTRUMENT PANEL - PART II

GM	VENTURA PARTS CATALOGUE
-----------	--

Key	Part Name	Group No.
1	SWITCH ASM., Windshield Wiper	10.163
2	SUPPORT, Courtesy Lamp Socket	10.275
3	RETAINER, Cigar Lighter	9.709
4	BULB, Courtesy Lamp (#631)	8.991
5	HOUSING, Cigar Lighter	9.709
6	BULB, Lamp (#1895)	8.991
7	SWITCH ASM., Inst. Compt. Lamp	10.275
8	KNOB & ELEMENT, Cigar Lighter	9.709
9	CLIP, Ash Tray Optics	12.016
10	SOCKET, Ash Tray Lamp	12.016
11	BULB, Inst. Cluster (#194)	8.991
12	CIRCUIT, Inst. Cluster Printed Wiring	2.480
13	CLUSTER ASM., Instrument (Serviced in Components)	N.S.
14	HARNESS, Auxiliary Speaker Wire	9.656
15	RECEIVER ASM., Radio (Serviced in Accessory Pkg.)	N.S.
16	SOCKET, Inst. Cluster	9.746
17	CONDUCTOR, Ash Tray Light	2.580
18	BULB, Inst. Cluster (#168)	8.991
19	ROD, Headlamp Switch	2.486
20	NUT ASM., Headlamp Switch	2.487
21	FLASHER ASM., Traffic Hazard	2.892
22	STRAP, Headlamp Switch Ground	N.S.
23	SWITCH ASM., Headlamp	2.485
24	WIRE ASM., Clock	9.772
25	HARNESS, Inst. Panel Wire	2.480
26	WIRE ASM., Inst. Compt. Lamp	N.S.
27	FLASHER ASM., Direction Signal	2.892
28	CLIP, Direction Signal Flasher	2.892
29	BEZEL, Defogger Switch	9.778
30	HOUSING, Defogger Switch	9.778
31	CLIP, Defogger Switch	N.S.
32	SWITCH ASM., Defogger	9.778

1971-74 INSTRUMENT PANEL - PART II

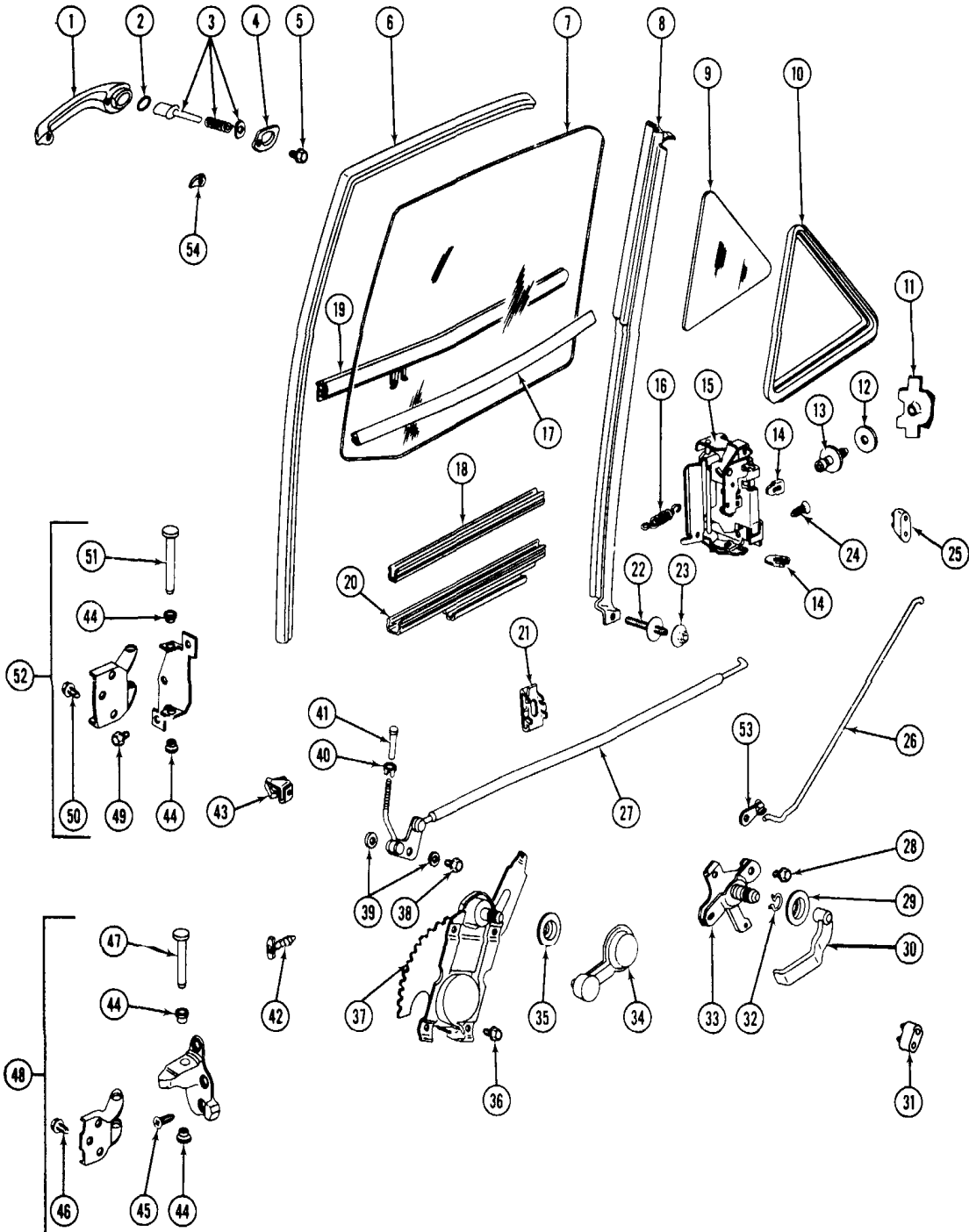


1971-74 FRONT DOOR HARDWARE



Key	Part Name	Group No.	Key	Part Name	Group No.
1	— PLATE, Upper Hinge Anchor - Door Side	10.450	47	— SPRING, Inside Handle Retaining	10.513
2	— PLATE, Upper Hinge Anchor - Body Side	10.450	48	— PLATE, Window Regulator Handle Bearing	10.515
3	— SEALING STRIP, Door Window Outer - At Belt	10.710	49	— SCREW, Bumper Support Extension to Support	N.S.
4	— GLASS, Front Door Window	10.681	50	— EXTENSION ASM., Window Bumper Support	10.716
5	— CHANNEL, Door Window Glass Run	10.701	51	— FASTENER, Door Weatherstrip	10.695
6	— SCREW, Outside Handle to Panel	10.527	52	— NUT, Door Vent to Inner Panel	10.670
7	— GASKET, Door Outside Handle to Panel - Front	10.537	53	— STUD, Door Vent to Inner Panel	10.670
8	— HANDLE, Door Outside (Less Button)	10.527	54	— FASTENER, Trim Pad to Inner Panel	14.683
9	— RING, Handle Push Button Sealing	10.529	55	— SWITCH ASM., Front Door Jamb	11.950
10	— BUTTON & SHAFT, Front Door Handle Push	10.529	56	— PLATE, Lower Hinge Anchor - Body Side	10.454
11	— SPRING, Door Handle Push Button	10.529	57	— CHANNEL & SCALPS, Door Vent Division	10.688
12	— WASHER, Handle Push Button Stop	10.529	58	— WEATHERSTRIP, Door Vent Division Channel	10.652
13	— GASKET, Door Outside Handle to Panel - Rear	10.537	59	— WASHER, Vent Friction Unit Tab	10.660
14	— SPRING, Door Lock Push Button Return	10.474	60	— WASHER, Door Vent Spring Retainer	10.660
15	— BUMPER, Door Lock Pillar Upper - Door Side	10.587	61	— WASHER, Door Vent Friction Unit	10.660
16	— SPRING, Door Lock Over - Center	10.474	62	— PIN, Vent Glass Channel Handle	10.664
17	— LOCK ASM., Front Door	10.470	63	— NUT, Vent Friction Unit	N.S.
18	— SCREW, Door Lock to Panel	10.474	64	— SPRING, Vent Friction Unit	10.660
19	— CLIP, Door Lock Spring	10.474	65	— PLATE, Lower Hinge Anchor - Door Side	10.454
20	— PLATE, Door Lock Striker Anchor	10.571	66	— RIVET, Lower Hinge Detent Link	10.455
21	— SEALING STRIP, Door Window Inner - At Belt	10.710	67	— RING, Door Lower Hinge Pin Retaining	10.466
22	— KNOB, Door Inside Locking Rod	10.559	68	— BUSHING, Door Hinge	10.464
23	— WASHER, Door Lock Striker	10.571	69	— SCREW, Lower Hinge to Door and Body	10.463
24	— STRIKER ASM., Front Door Lock	10.569	70	— STRAP, Door Lower Hinge - Female	10.454
25	— GASKET, Door Lock Cylinder to Door	10.529	71	— ROLLER ASM., Door Lower Hinge	10.455
26	— RETAINER, Front Door Lock Cylinder	10.551	72	— LINK, Door Lower Hinge Detent	10.455
27	— CYLINDER KIT, Door Lock	10.550	73	— STRAP, Door Lower Hinge - Male	10.454
28	— FERRULE, Inside Locking Rod Knob	10.560	74	— SPRING, Door Lower Hinge	10.455
29	— ROD, Door Inside Locking to Lock	10.563	75	— PIN, Door Lower Hinge	10.466
30	— CHANNEL, Door Window Lower Sash	10.685	76	— HINGE ASM., Door Lower	10.454
31	— CHANNEL, Door Window Glass Run - Front	10.688	77	— STOP, Door Vent Friction Unit	10.660
32	— CONTROL ASM., Door Lock Remote	10.500	78	— SCREW, Vent Locking Handle Support Drive	10.664
33	— SCREW, Lock Remote Control to Panel	10.506	79	— WASHER, Vent Glass Channel Handle	10.664
34	— CLIP, Inside Locking Rod to Inner Panel	10.563	80	— HANDLE, Door Vent Glass Channel	10.664
35	— ROD, Lock Remote Control to Lock	10.506	81	— FILLER, Door Window Lower Sash Channel	10.685
36	— BUMPER, Door Lock Pillar - Door Side	10.587	82	— CHANNEL ASM., Front Door Vent Glass	10.655
37	— CLIP, Lock Remote Control Rod	10.565	83	— RIVET, Door Vent Pivot Hinge	10.669
38	— CLIP, Lock Remote Control to Lock Rod	10.565	84	— WEATHERSTRIP, Front Door Ventilator	10.652
39	— CAM, Door Inner Panel	10.792	85	— GLASS, Front Door Vent	10.658
40	— SCREW, Door Inner Panel Cam Inner Panel	10.792	86	— VENTILATOR, Front Door (Less Glass)	10.650
41	— HANDLE, Lock Remote Control	10.512	87	— RING, Door Upper Hinge Pin Retaining	10.466
42	— CLIP, Door Handle Retaining	10.513	88	— STRAP, Door Upper Hinge - Female	10.450
43	— WASHER, Lock Remote Control Handle	10.517	89	— SCREW, Upper Hinge to Door and Body	10.463
44	— SCREW, Window Regulator to Inner Panel	10.783	90	— STRAP, Door Upper Hinge - Male	10.450
45	— REGULATOR ASM., Front Door Window	10.783	91	— PIN, Door Upper Hinge	10.466
46	— HANDLE, Door Window Regulator	10.797	92	— HINGE ASM., Door - Upper	10.450

1971-74 FRONT DOOR HARDWARE

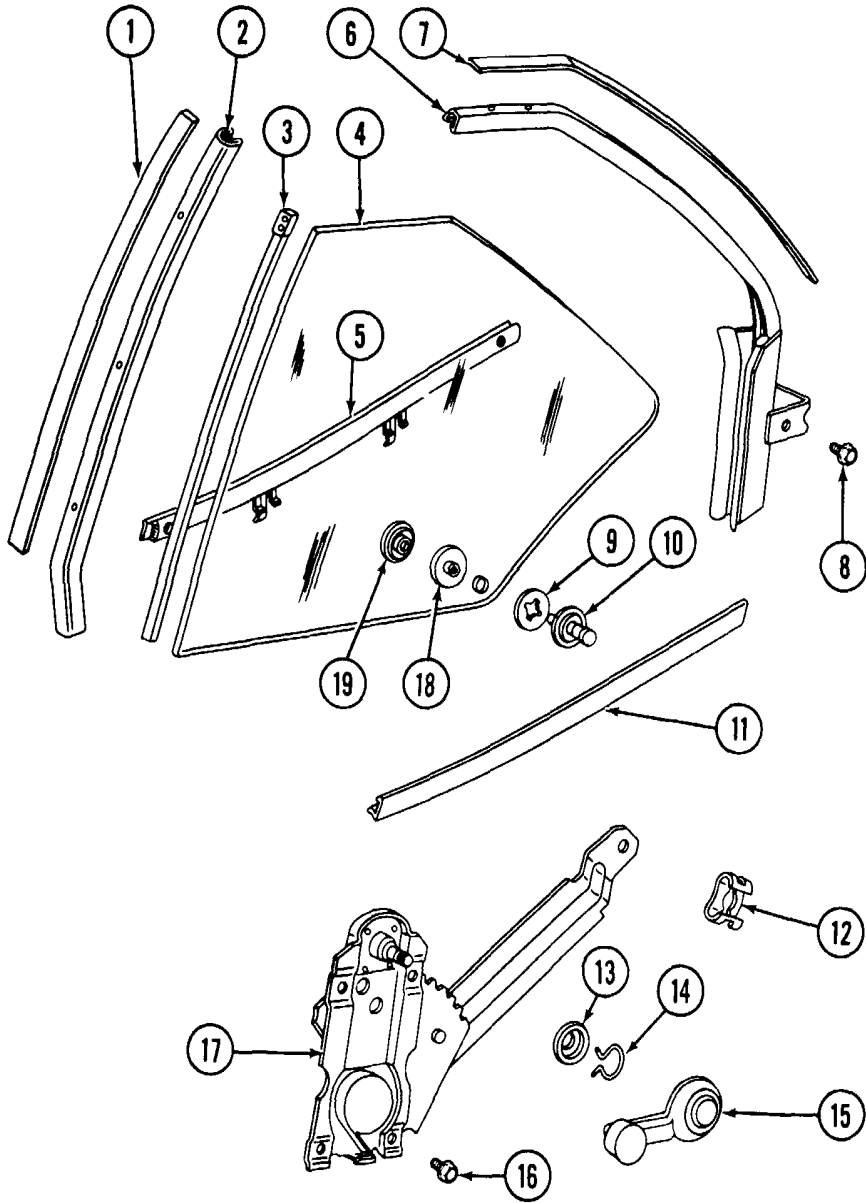


1971-74 REAR DOOR HARDWARE



Key	Part Name	Group No.
1	HANDLE, Door Outside - Less Button	10.527
2	RING, Door Handle Push Button Sealing	10.529
3	BUTTON & SHAFT, Rear Door Handle Push	10.529
4	GASKET, Handle to Panel - Rear	10.537
5	SCREW, Handle to Panel	10.527
6	CHANNEL, Rear Door Window Glass Run	10.759
7	GLASS, Rear Door Window	10.741
8	CHANNEL, Stationary Vent Glass	10.826
9	GLASS, Rear Door Stationary Vent	10.827
10	CHANNEL, Stationary Vent Glass Division	10.829
11	PLATE, Door Lock Striker Anchor	10.571
12	WASHER, Door Lock Striker	10.571
13	STRIKER, Rear Door Lock	10.569
14	CLIP, Door Lock Spring	10.474
15	LOCK ASM., Rear Door	10.473
16	SPRING, Door Lock Push Button Return	10.474
17	SEALING STRIP, Window Inner - At Belt	10.774
18	FILLER, Window Lower Sash Channel	10.747
19	SEALING STRIP, Window Outer - At Belt	10.774
20	CHANNEL, Door Window Lower Sash	10.747
21	CLIP, Inside Locking Rod to Panel	10.565
22	STUD, Stationary Vent Glass Division Channel	10.829
23	NUT, Stationary Vent Glass Division Channel	10.829
24	SCREW, Door Lock to Panel	10.474
25	BUMPER, Lock Pillar Upper & Door Side	10.587
26	ROD ASM., Lock Remote Control to Lock	10.506
27	ROD ASM., Door Inside Locking to Lock	10.563
28	SCREW, Lock Remote Control to Panel	10.506
29	PLATE, Lock Remote Control Handle Bearing	10.515
30	HANDLE, Lock Remote Control	10.512
31	BUMPER, Lock Pillar Lower - Door Side	10.587
32	SPRING, Inside Handle Retaining	10.513
33	CONTROL ASM., Door Lock Remote	10.500
34	HANDLE, Door Window Regulator	10.797
35	PLATE, Window Regulator Handle Bearing	10.515
36	SCREW, Window Regulator to Inner Panel	10.791
37	REGULATOR ASM., Door Window	10.791
38	SCREW, Inside Locking to Lock Rod	10.556
39	WASHER, Inside Locking to Lock Rod	10.556
40	FERRULE, Inside Locking Rod Knob	10.560
41	KNOB, Inside Locking Rod	10.559
42	FASTENER, Door Weatherstrip	10.695
43	FASTENER, Trim Pad to Inner Panel	14.683
44	BUSHING, Door Hinge	10.464
45	BOLT, Lower Hinge to Door	10.463
46	SCREW, Lower Hinge to Body	10.463
47	PIN, Rear Door Lower Hinge	10.466
48	HINGE ASM., Rear Door - Lower	10.460
49	SCREW, Upper Hinge to Door	10.463
50	SCREW, Upper Hinge to Body	10.463
51	PIN, Rear Door Upper Hinge	10.466
52	HINGE ASM., Rear Door - Upper	10.456
53	CLIP, Lock Remote Control to Lock Rod	10.565
54	GASKET, Handle to Panel - Front	10.537

1971-74 REAR DOOR HARDWARE



1971-74 REAR QUARTER HARDWARE

Key	Part Name	Group No.
1	SEALING STRIP, Glass Run Channel - Front	11.015
2	CHANNEL ASM., Quarter Window Glass Run - Front	11.021
3	CHANNEL ASM., Quarter Window Front Sash	11.007
4	GLASS, Quarter Window	11.011
5	SEALING STRIP, Window Outer - At Belt	11.015
6	CHANNEL ASM., Quarter Window Glass Run - Rear	11.021
7	SEALING STRIP, Glass Run Channel - Rear	11.015
8	SCREW, Glass Run Channel to Panel	11.040
9	WASHER, Window Glass to Regulator	11.011
10	SCREW, Window Glass to Regulator	11.007
11	SEALING STRIP, Window Inner - At Belt	11.015
12	CLIP, Window Regulator to Lower Sash	11.041
13	PLATE, Window Regulator Handle Bearing	10.515
14	SPRING, Inside Handle Retaining	10.513
15	HANDLE, Quarter Window Regulator	10.797
16	SCREW, Regulator to Inner Panel	11.041
17	REGULATOR ASM., Quarter Window	11.041
18	BUSHING, Window Glass to Regulator	11.011
19	NUT, Window Glass to Regulator	11.011